

THE STAMP FORUM NEWSLETTER

Volume 7, Issue 2

APS Chapter 1591

January – March 2023

IN THIS ISSUE:

A TRIBUTE TO QUEEN ELIZABETH II



A REGISTERED LETTER'S JOURNEY

HER MAJESTY QUEEN ELIZABETH II, 1926-2022



**PLUS: 2023 APS ARTICLE OF DISTINCTION SELECTION
FROM THE AP ARCHIVES
NAVIGATING OUR FORUM
WRITE FOR THE NEWSLETTER
TSF'S PHILATELIC LIBRARY**

THE STAMP FORUM NEWSLETTER

EDITOR: Steve Tomisek (*tomiseksj*)

ASSISTANT EDITORS:

Jerry Bodoff (*JerryB*)

Peter Ware (*brightonpete*)

FORUM STAFF

FOUNDER: Jack Witcher (*irishjack*)

ADMIN/MODERATOR TEAM:

Chris Dorn (*Beryllium Guy*)

Michael Hide (*Londonbus1*)

Ryan Davenport (*Ryan*)

Steve Tomisek (*Admin/tomiseksj*)

The Stamp Forum (TSF) Newsletter is a quarterly publication of The Stamp Forum. Opinions expressed in articles in this newsletter are those of the respective authors and are not necessarily endorsed by the Forum. The Forum cannot be responsible for the accuracy of any information printed herein.

Editorial and Forum staff may be contacted using the Forum's personal message (PM) system. The Editor and Forum Admin may also be contacted at stampforum.net@gmail.com.

Established in 2013, TSF is an online stamp club with a worldwide membership. The Forum is also Chapter 1591 of the American Philatelic Society. Membership is free

Write for Your Stamp Forum's Newsletter

We are always looking for articles of a philatelic nature for publication in the Newsletter. These can vary in length from 1 page to several and can cover any topic imaginable as long as there is a philatelic connection. Well-researched articles, tips for collectors, stamp collecting memories, stamp show and philatelic book reviews, etc., are all welcome topics. Just send us a text file with some supporting image files and we'll take care of the editing and layout. The Forum and its Newsletter need your support so please help us!

TABLE OF CONTENTS

<i>Forum & APS Chapter 1591 Update (Admin)</i>	p. 2
<i>TSF's 2023 APS Article of Distinction (Editorial Staff)</i>	p. 3
<i>A Tribute to Queen Elizabeth II (Beryllium Guy)</i>	p. 4
<i>A Registered Letter's Journey: Three Countries in Twelve Days (DavidMFrye)</i>	p. 12
<i>From the AP Archives (Editorial Staff)</i>	p. 15
<i>Her Majesty Queen Elizabeth II, 1926-2022 (Londonbus1)</i>	p. 16
<i>Navigating Our Forum – Viewing Profiles (Editorial Staff)</i>	p. 23
<i>Write for the Forum's Newsletter (Editorial Staff)</i>	p. 25
<i>The Forum's Philatelic Library (tomiseksj)</i>	p. 26
<i>In Closing... (Admin)</i>	p. 27

Forum & APS Chapter 1591 Update

In July of this year our Forum will celebrate its 10th year of existence, having first appeared online that month in 2013. Membership remains free and open to all who agree to abide by the Philatelic Code of Ethics and conduct themselves in an appropriate manner. We've had relatively few "problems" thus far and our ranks now exceed 700 members. About 70 of those sign in to their accounts each day and more than 160 members have signed into their accounts at least once in the past month.



While the above numbers are likely respectable for a venue such as ours, I'd like to see the number of active participants (i.e., those who post) increase. Similarly, I'd like to see the number of members who submit material for the Newsletter grow from the few who contribute regularly. If you haven't yet tried your hand at [philatelic writing](#), please consider what you might be able to contribute.

In February, we'll celebrate our 9th year as Chapter 1591 of the American Philatelic Society. You can stay abreast of all the latest APS and APRL happenings in the Forum's copy of The American Philatelist. For those who long to travel, consider attending this year's Great American Stamp Show in Cleveland from August 10 to 13. In case you missed it, the APS [StampStore](#) is now operational on the HipStamp platform.

Lastly, I'd like to apologize to our Assistant Editors for not giving them the opportunity to correct my mistakes in this issue. I've fallen woefully behind in all things stamp and Forum related this past month and January promises no improvement. Therefore, I've opted to release this issue in its unchecked form.

Steve Tomisek
Forum Admin/APS Chapter Ambassador

TSF's APS Articles of Distinction

By Editorial Staff

To date, our Forum has submitted six articles for publication on the American Philatelic Society's [website](#). All have been posted there and each of those has a link that will bring readers to our Forum. Our 2022 submission is currently featured on the website's [Collecting Insights](#) page.

In addition to the recognition given our Forum, the authors receive a certificate of achievement from APS.

The articles chosen by the membership to represent our Forum/APS Chapter in each of the annual competitions conducted thus far are shown below, and each may be viewed by clicking on the respective link.

- 2017 [The 1926 Madrid-Manila Flight – A Pioneering Journey](#)
- 2018 [Visiting Stamp Shops Around the World](#)
- 2019 [USS Constitution – America's Ship of State](#)
- 2020 [Philatelic Travelogue: Paris and Its Stamp Market](#)
- 2021 [SAMOA, 1840-2000: Transition from Chiefly Fiefdoms to Nationhood](#)
- 2022 [Philatelic Travelogue: Hunting British Postboxes](#)

The 2022 selection process closed with four articles competing for the distinction of being selected as The Stamp Forum's 2022 APS Article of Distinction – one from each Volume 6 issue published. For the 2023, the same selection process will be followed. A poll will be created to allow you to select your favorite article from this issue. That poll, and the ones created for the other issues, will close on August 31, 2023 at Midnight, New York time. A final poll will be posted in September to select the article that will represent our Chapter in 2023. The polls will be posted on the [Article of Distinction board](#).

If you enjoy reading the Newsletter, please show its contributors your appreciation by making your selections known.



A Tribute to Queen Elizabeth II

The Princess Elizabeth as Portrayed on Stamps

By Chris Dorn (*Beryllium Guy*) with Sarah Grant (*sarah*)

Introduction

As I write this, I can scarcely believe that it has already been over two months since Queen Elizabeth II (QEII) passed away. She was the only monarch of the United Kingdom that I had ever known, so it was hard for me to accept that she was gone. Despite her 70 years on the throne and 96 years of age, her passing somehow seemed sudden to me in a way that I can't really explain.

All I know is that I feel lucky to have lived in the UK during her reign, which is a memory I will always treasure. I am a great admirer of hers, although never officially one of her subjects, having spent my years in the UK as a visiting resident. I have had these last few weeks to think about how I might approach writing something about her, about whom so much has already been said.

I have concluded that the best way for me to do it is to think about one aspect or area of her long and amazing life and to focus on that. My favorite stamp images of her are those that were issued when she was still Princess Elizabeth. It must be remembered that Elizabeth ascended to the throne sooner than generally anticipated, when her father, King George VI, died unexpectedly at the age of 56 in February of 1952. One could imagine that Princess Elizabeth must have thought that she would have at least another 10 years before succeeding her father, but of course, as the history unfolded, it was not to be.

Early Stamps Depicting the Princess Elizabeth, 1932-1936

Newfoundland holds the honor of being the first stamp-issuing entity to show Princess Elizabeth on a postage stamp, which happened on 2 January 1932, when Elizabeth was still a few months shy of her sixth birthday. The stamp of the young Princess was one in a set of 12 at its time of issue.



Figure 1. Left: The first postage stamp showing Princess Elizabeth was Newfoundland, Sc.192 (SG214), 6-cent dull blue, issued on 02-Jan-1932. In the design, one can see the heraldic symbols of the English rose (left) and Scottish thistle (right) flanking the central portrait, which is based on a photograph taken by Marcus Adams in 1929. Right: Imperforate pair of the same stamp, Newfoundland Sc.192a (no listing in SG Catalogue 2014 Edition). Image credit: Sarah Grant (*sarah*), from her personal collection. The imperforate pairs of this stamp must be pretty uncommon, as it is the only denomination in the original set without an SG listing.

After making her stamp debut in 1932, it was another three years before Princess Elizabeth was again featured on a postage stamp. This time, it was one issued by Canada to commemorate the 25th Jubilee of her grandfather, King George V (KGV). It seems that Canada and its province of Newfoundland were the two stamp-issuing entities that had the most examples of postage stamps of Princess Elizabeth during her childhood and early teenage years.

Another interesting fact about the Canada KGV Jubilee set is that it is one of the few, possibly the first and maybe the only set issued in the British Commonwealth that has stamps depicting four monarchs in it: Elizabeth II (then Princess Elizabeth), George VI (then Duke of York), Edward VIII (then Prince of Wales), and of course King George V, whose Jubilee it was (not shown). About eight months after the Jubilee, KGV passed away in January of the following year, which ended up making 1936 the year of three kings in Great Britain.



Figure 2. Three examples from the KGV Jubilee set of 6 issued on 04-May-1935. Left: Canada, Sc211 (SG335) 1-cent green, showing Princess Elizabeth at the age of 9. Middle: Canada, Sc212 (SG336) 2-cent brown showing her father, then Duke of York. Right: Canada, Sc214 (SG338) 5-cent blue showing her uncle, the heir apparent and future King Edward VIII, then Prince of Wales.

Of course, it must be remembered that prior to December 1936, Princess Elizabeth's place in royal succession was indirect, as it was her uncle, King Edward VIII, who succeeded George V on the throne, and it would have been his children, if he had had any, who would have succeeded him. In what is still considered by many as a remarkable turn of events in the history of the British monarchy, Edward VIII abdicated in December 1936, which resulted in his brother Albert, ascending to the throne as George VI, which then put Princess Elizabeth in the direct line of succession.

The Young Princess Elizabeth as Future Queen, 1937-1945

Once George VI became king upon the abdication of his brother, it was clear that Princess Elizabeth would become queen, unless she would be supplanted by a younger male sibling. But George VI never had any more children after his two daughters, so Princess Elizabeth's place in the line of succession was assured. George VI was crowned on 12 May 1937, a date originally planned for the coronation of Edward VIII.

In the spring of 1939, King George VI (KGVII) and his family embarked on a month-long tour of North America, which marked the first visit of a reigning sovereign to any overseas Dominion in the British Empire. Canada commemorated the visit with a set of postage stamps, and there were Cinderella souvenir poster stamps created for the occasion, too (see Figures 3 and 4).



Figure 3: Two examples from the KGVI Royal Visit set of 3 issued on 15-May-1939. Left: Canada, Sc246 (SG372) 1-cent green and black, showing the 13-year-old Princess Elizabeth side by side with her younger sister Princess Margaret. Right: Canada, Sc248 (SG374) 3-cent dark carmine and black, showing KGVI and his wife, Queen Elizabeth.

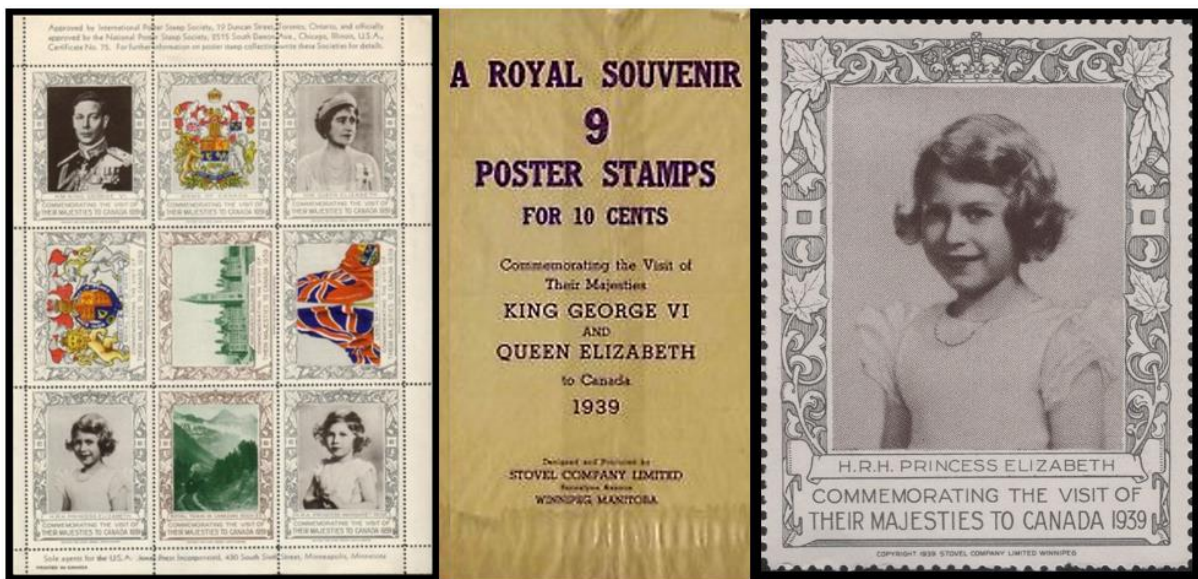


Figure 4. Cinderella poster stamps for the 1939 Royal Visit printed by the Stovel Company Ltd. In Winnipeg, Manitoba. Left: The full sheet of 9 stamps, complete with selvedge, on which information about the stamps is printed at the top and bottom. Middle: The brown paper bag in which the sheets were packaged and sold. Right: Close-up scan of the stamp featuring Princess Elizabeth, digitally cropped from the sheet. I was lucky enough to win one of these sheets in a TSF giveaway in 2017 offered by Frog Wensley (firstfrog2013). It was one of my earliest Cinderella acquisitions and still one of my personal favorites.

Only a few months after the trip to Canada, World War II broke out in Europe, which put an end to Royal Visits until after the war. It seems that there were fewer stamps depicting Princess Elizabeth issued during the war years, but a couple of notable standouts are some beautiful semi-postal issues from New Zealand, as shown in Figure 5.



Figure 5. Examples of semi-postal stamps issued during World War II. Left: New Zealand, ScB23 (SG637) 2-pence + 1-penny red brown triangular stamp depicting Princess Elizabeth at age 16, issued in Oct-1942. This stamp is part of a set of 2, and it may be the only triangle stamp of Elizabeth prior to her becoming queen. Right: New Zealand, ScB25 (SG664) 2-pence + 1-penny chalky blue showing Princess Elizabeth on the right, standing side by side with her younger sister, Princess Margaret, issued in Oct-1943.

Princess Elizabeth distinguished herself by joining the British Armed Forces during the war, where she worked as a mechanic in the Auxiliary Territorial Service (ATS), which was the name given to the women's branch of the British Army at that time. In so doing, she became the first female member of the Royal Family to serve on active duty. By the time of her passing, she was the last surviving head of state to have served in the military during World War II.

Princess Elizabeth During the Post-War Years, 1946-1952

After the war, Royal Visits resumed, which were always good occasions to commemorate with the issuing of stamps. Other important events in Princess Elizabeth's life were also marked by the issuing of stamps, such as her 21st birthday in April 1947, her marriage in November 1947, and motherhood in the years that followed (see Figures 6 through 9).



Figure 6. Left: Southern Rhodesia, Sc65 (SG62) ½-penny dark green and black, issued on 01-Apr-1947 to mark the Royal Visit. Princess Elizabeth's portrait appears on the left with Princess Margaret on the right. This stamp is one in a set of 2. Right: Southern Rhodesia, Sc69 (SG66) 3-pence deep blue, issued on 08-May-1947, which was the 2nd anniversary of Victory in Europe Day. This stamp is one in a set of 4, in which each member of the Royal Family is shown on an individual stamp.



Figure 7. Left: Newfoundland, Sc269 (SG293) 4-cent light blue, issued on 21-Apr-1947 in honor of Princess Elizabeth's 21st birthday. This appears to be the first time that a stamp of Princess Elizabeth was issued on its own that was not part of a larger set. Right: Cover postmarked in South Africa on Princess Elizabeth's 21st birthday. The se-tenant pair of stamps, one inscribed in English and the other in Afrikaans, are South Africa, Sc105 (SG113) 3-pence dark blue (pair), issued on 17-Feb-1947, to mark a Royal Visit. This pair of stamps is one in a set of 3 pairs. Image credit: Sarah Grant, from her personal collection.



Figure 8. Left: Australia, Sc210 (SG222) 1-penny brown violet, issued on 20-Nov-1947 in honor of Princess Elizabeth's wedding to Philip Mountbatten. Right: New Zealand, ScB36-B37 (SG701-702) complete set of 2 showing Princess Elizabeth with her first-born son, Prince Charles. The set was issued on 02-Oct-1950. To best knowledge, this depiction marks the first time that Princess Elizabeth is shown on a stamp with someone other than her parents or her sister.



Figure 9. Left: Malta, Sc231 (SG257) 1-shilling gray black, issued on 01-Dec-1950 to commemorate the visit of Princess Elizabeth to the island. This stamp is the third in a set of three values, all of the same design. Right: Canada, Sc315 (SG440) 4-cent violet, issued on 26-Oct-1951 to mark the occasion of Princess Elizabeth's visit together with her husband Philip, then Duke of Edinburgh, to Canada and the United States. This stamp was the first one on which she appeared with her husband, and it was the last postage stamp issued with her image prior to her accession to the throne in February 1952.

Collecting Stamps & Postal History of Elizabeth as Princess

Images of Queen Elizabeth II have arguably appeared on more stamps than any other person in history as a result of her personal longevity, the length of her reign, and the time period, in which the issuing of stamps was prolific. This article has focused on the subtopic of QEII as Princess by showing primarily mainstream material such as contemporaneous postage stamps, i.e., those issued during the time when she was still Princess, but for the topical collector, the possibilities go well beyond that.

There is a host of other material, including essays, plate and die proofs, Cinderella issues, postcards, and photographs on which stamp images have been based, to name just a few. In addition, there have been stamps issued after Elizabeth became Queen showing images of her while she was still Princess (see Figures 10-11).

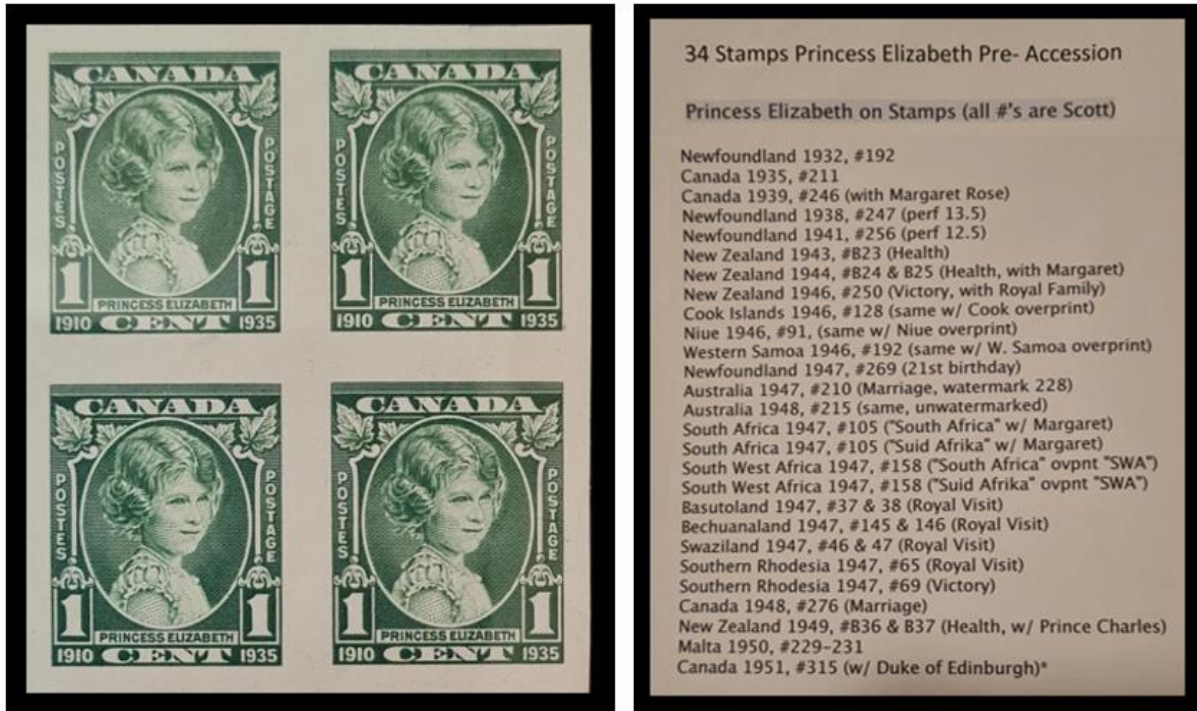


Figure 10. Left: Plate proof block of four, printed on India card, of Canada, Sc211 (SG335) 1-cent green (issued stamp shown in Fig. 2) from the KGV Jubilee set from 1935. Right: List of stamps depicting Princess Elizabeth prior to her accession to the throne, compiled by an unknown source. It is not known if the list is comprehensive or completely accurate. Image credits: both are from the personal collection of Sarah Grant.

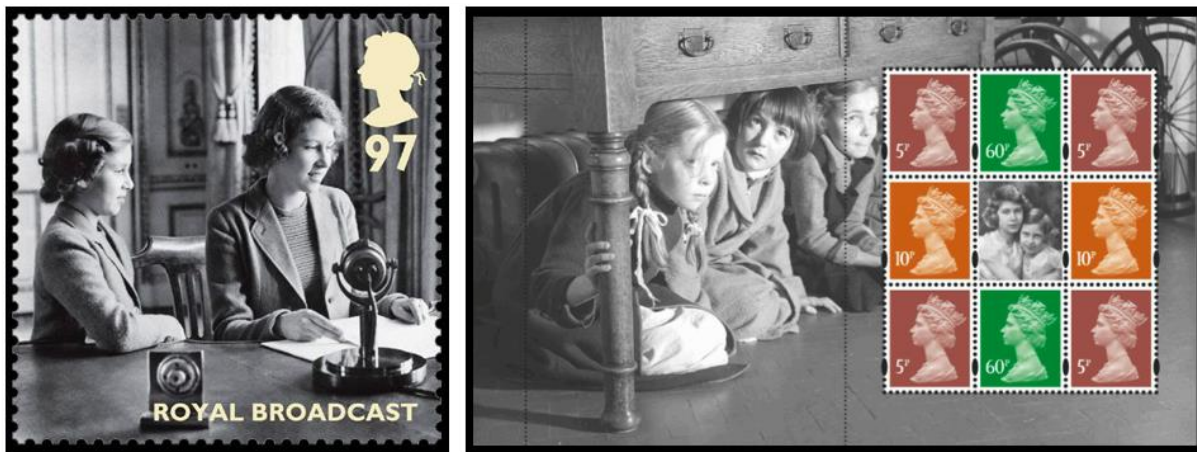


Figure 11. Stamp issues from the 2010 "Britain Alone" series, commemorating events in 1940 in the early days of World War II. Left: Princess Elizabeth with Princess Margaret at the time of a royal radio broadcast. Right: Booklet pane of Machin-type QEII definitive stamps with black-and-white photo Cinderella/vignette of Princesses Elizabeth and Margaret in the center of the pane.

The topical area of QEII stamps and related material is a rich one indeed, and hopefully this article has demonstrated that there can be interesting subtopics as well, upon which philatelists could assemble thematic collections and exhibits.

Acknowledgements

It has been a privilege to have had the opportunity to write a bit in tribute to Queen Elizabeth II and to honor her life and achievements. It has been a further privilege to be able to work with Sarah and her extensive knowledge about and collection of QEII memorabilia, ephemera, philatelic material, and more, which has been an irreplaceable resource in putting together this article.



Plans are underway to turn Boston into the world's center of philately for eight days in 2026, as the twelfth international philatelic exhibition of the United States gathers at the [Boston Convention & Exhibition Center](#) (BCEC). To be held during Memorial Day week (May 23–30, 2026) in the [Seaport](#) section of the city, Boston 2026 World Expo will be a significant part of the country's 250th anniversary festivities.

In the previous issue of the Newsletter, members were offered the chance to win an unsigned copy of the first show label sheetlet produced by the show's organizing committee. I'm pleased to announce that François Deschamps (*FDI*) was randomly selected from among all of the entrants to receive the sheetlet.

A Registered Letter's Journey: Three Countries in Twelve Days

By David M. Frye (DavidMFrye)

Introduction

International registered mail does not offer letters the *quickest* passage from origin to destination, but it does provide mailed items with a *secure*, verifiable chain of custody. The markings that postal clerks traditionally have applied to letters—in the time before the introduction of scannable barcodes—provide evidence of a letter's stops along the way from sender to recipient. The international registered letter shown in Fig. 1 bears such marks from its journey—Cairo, Egypt, to Blantyre, Malawi, with a stop in Kenya.



Figure 1. Cairo, Egypt, to Blantyre, Malawi, 22 December 1982 (original: 185.0 mm × 129.0 mm).

Itinerary

Eleven definitive stamps showing three designs paid postage and fees of 690 M (*Millieme*, one one-thousandth of an Egyptian pound) for the letter's registration and mailing. In Cairo, a postal clerk probably added the registered mail number "000208" with a black handstamp, striking the envelope between the two clusters of stamps. The blue-ink handwritten notation on the front of the letter—an underscored "R7"—may be an additional registered mail marking applied by a clerk.

Then, the journey began.

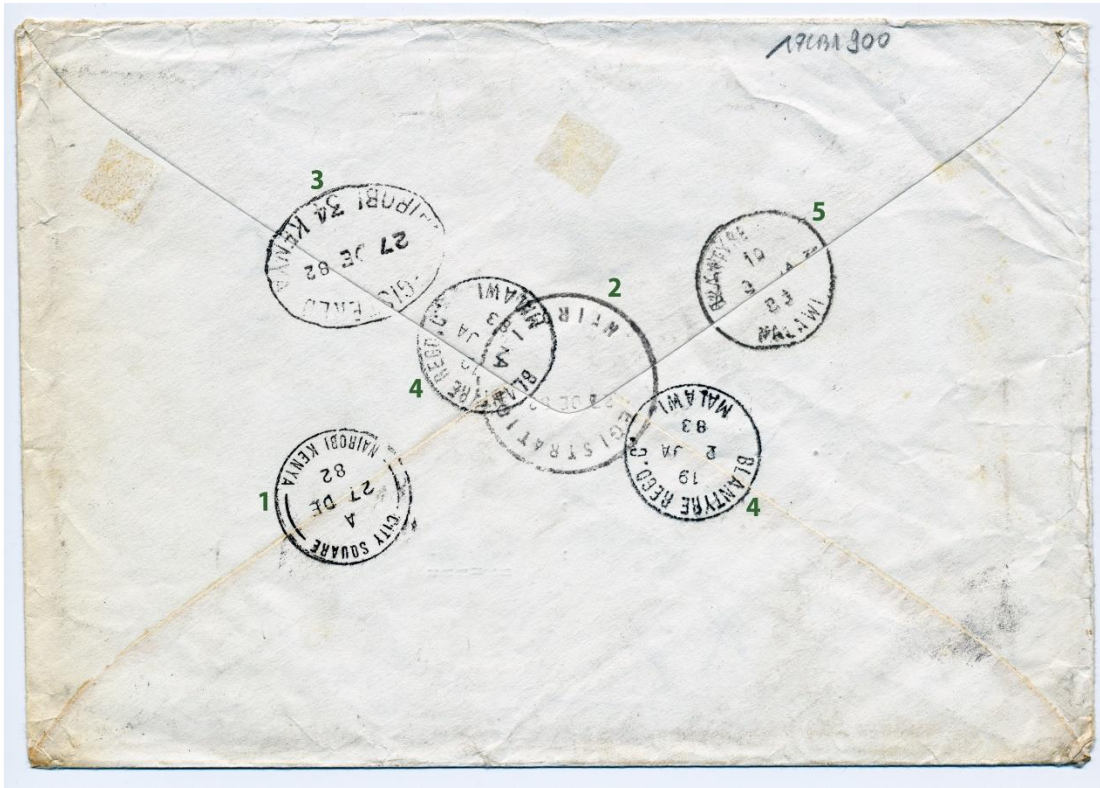


Figure 2. Postmarks from Nairobi, Kenya, and Blantyre, Malawi. The overlaid green numerals correspond to the entries in Table 1.

The back of the envelope, shown in Fig. 2, includes six postmarks, supplementing the five appearing on the front of the envelope, that provide the details of the letter’s travels, detailed in Table 1.

Table 1. Post Office Stops on a Registered Letter’s Journey

Number	Date	Location	Strikes	Diameter (mm)	Postmark Note
Front-1	22 Dec. 1982	Cairo, Egypt	5	36.0	Bilingual: English and Arabic
Back-1	27 Dec. 1982	Nairobi, Kenya	1	23.5	City Square
Back-2	27 Dec. 1982	Nairobi, Kenya	1	30.0	Registration
Back-3	27 Dec. 1982	Nairobi, Kenya	1	32.0, 24.5	Registered
Back-4	2 Jan. 1983	Blantyre, Malawi	2	23.5	Regd. C
Back-5	3[?] Jan. 1983	Blantyre, Malawi	1	24.0	A[?]

The locations and dates noted in these postmarks show that the letter made its way reasonably quickly from origin to destination—Cairo to Blantyre—in twelve days, with handling by postal clerks in three cities documented on either three or four days. Thus, these markings confirm that the sender’s letter received the treatment for which registered mail is known: a documented chain of custody from origin to destination.

Recipient

The letter’s recipient, Mr. D.R.P. Glyn Jones, maintained a post office box in Blantyre. An online search to provide some background led at first to Sir Glyn Smallwood Jones, Malawi’s first governor-general, who

served in that position from 1964 through 1966 and who, once retired, continued his involvement with the country (Wikipedia.org, 2021). This possible match leaned on the first and last names: Glyn and Jones. It did not, however, explain the leading trio of initials.

Further searching located another possible match that relied upon several entries in various issues of *The Quarterly Circular*, the journal of the Egypt Study Circle. The first entailed comments on a continuing discussion of civil censorship, penned by a “Mr P Glyn-Jones” (Egypt Study Circle [ESC], No 158). Then, two entries attributed to “Paul Glyn-Jones” appeared in 1992 and 1998, discussing elements of Egyptian date stamps and delivery postmarks (ESC, Nos. 161 and 184). Finally, “D.R.P. Glyn-Jones” wrote “Civilian postal markings of Heliopolis” in 2001 (ESC, No. 198). In each case, the author’s ESC member number—231—appears with his name. Further, the 1998 edition of the journal presents a change of address for ESC 231, “D.R.P. Glyn-Jones.” Thus, it seems reasonable to conclude that the initial “P” stands for “Paul.”

Given the letter’s origin in Cairo, Egypt, and a likely identification of the recipient as a postal historian who focused on studies of Egypt, it seems reasonable to conclude that a postal clerk placed the registered letter in the hands of D.R.P[aul] Glyn[-]Jones on either 2 or 3 January 1983.

Conclusion

This registered letter provides a solid example of an accountable mailed item traveling through the international postal network on its way from sender to recipient. The fact that postal clerks in three countries provided this service testifies to the spirit of international cooperation that animates the global movement of the mail.

References

- P. Glyn-Jones, “Civil Censorship,” *The Quarterly Circular*, No. 158, June Quarter 1991, p. 171, <http://www.egyptstudycircle.org.uk/QCs/QC158.pdf>; accessed 1 August 2021.
- Paul Glyn-Jones, “Egypt Postage Prepaid Military Datestamps 1941–1947,” *The Quarterly Circular*, No. 161, March Quarter 1992, p. 259, <http://www.egyptstudycircle.org.uk/QCs/QC161.pdf>; accessed 1 August 2021.
- Paul Glyn-Jones, “The Postal Markings of Egypt: Addendum to the ‘Delivery’ Postmarks,” *The Quarterly Circular*, No. 184, March Quarter 1998, p. 224, <http://www.egyptstudycircle.org.uk/QCs/QC184.pdf>; accessed 1 August 2021.
- D.R.P. Glyn-Jones, “Civilian postal markings of Heliopolis,” *The Quarterly Circular*, No. 198, September Quarter 2001, p. 253, <http://www.egyptstudycircle.org.uk/QCs/QC198.pdf>; accessed 1 August 2021.
- Wikipedia.org, “Glyn Smallwood Jones,” https://en.wikipedia.org/wiki/Glyn_Smallwood_Jones; accessed 31 July 2021.

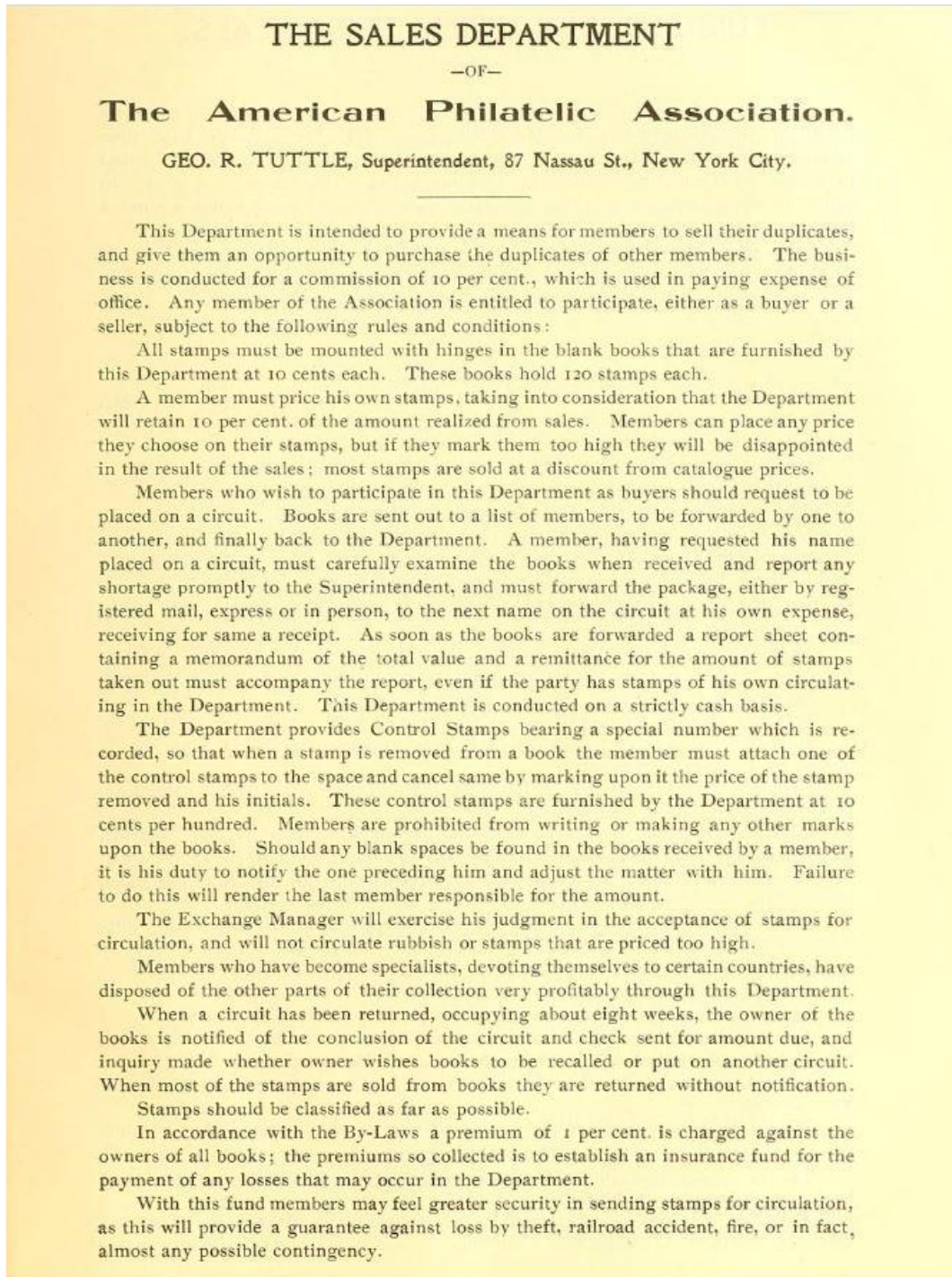
About the Author

David M. Frye collects items that inspire him to research and write stories about mail services and the people who send, handle, and receive letters and parcels. His writings have appeared in *The Airpost Journal*, *Auxiliary Markings*, *B.E.A.—The Bulletin of the East Africa Study Circle*, *Forerunners*, *The Journal of the Rhodesian Study Circle*, *LPS Journal: The Journal of the Liberian Philatelic Society*, *The Miasma Philatelist*, *Postage Due Mail Study Group Journal*, *Postal History Journal*, *The Postal Label Bulletin*, *Scribblings*, *The Stamp Forum Newsletter*, *The United States Specialist*, *Vatican Notes*, and *The Vermont Philatelist*. A past member of the Board of Directors of the Postal History Society, he lives in Franklin, Massachusetts, and works in nearby Framingham as a lead clerk for the U.S. Postal Service.

From the Archives – A Window to the Past

By Editorial Staff

If you find articles such as this of interest, you may find more in The American Philatelist Archive, hosted by Smithsonian Libraries, at <https://library.si.edu/digital-library/book/american-philatelist>.



The above article appeared in the 1898 annual issue of The American Philatelist (V12 p.67). I thought it fitting to share, given the recent migration of the APS StampStore to the HipStamp platform.

Cinderella Corner No. 20: Her Majesty Queen Elizabeth II, 1926-2022

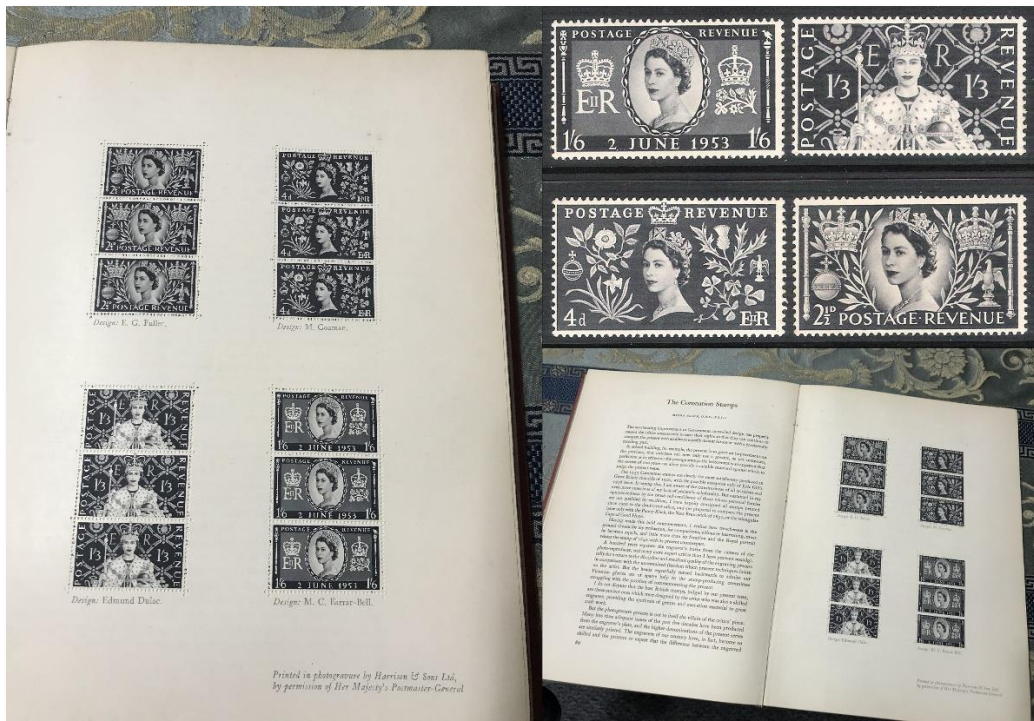
By Michael Hide (Londonbus1)

I cannot say I was a fan, or a Royal fanatic, but I did follow and admire our Queen from the moment I saw her at our local railway station, where I could be seen jumping up and down aside my parents. Through all her engagements and family troubles, she was our rock, someone to look up to, to aspire to, even if I didn't agree with all her decisions.

So, it was on September 8th this year when news filtered through of her passing. I could not imagine the feeling of loss that would overtake me for a short time. It was almost like losing someone close to me, which in a sense it was, being the only Monarch of the United Kingdom & Commonwealth that I had ever known. "Long May She Reign" ...and she did.

In putting together this little Cinderella 'mélange' to celebrate her life, I thought it would be fitting to start with a gift from TSF member, Sarah, our resident QEII expert on memorabilia and art, and whose posts on the topic we have all long enjoyed.

The 1954 Penrose (design) Annual contained a sheet of black prints of the 1953 Harrison & Sons Coronation Stamps as a block (page) of 12, 3 of each design with designer inscriptions and underprints. A key item for any collector of British Cinderella items, it always seemed to be a 'bridge too far' as I was usually outbid on those few occasions they came up on offer. Sarah read about my woes and offered to send me not only the sheet, but the whole book as she had a spare copy. The book now takes pride of place alongside stamp albums and catalogues. Thank you again, Sarah!

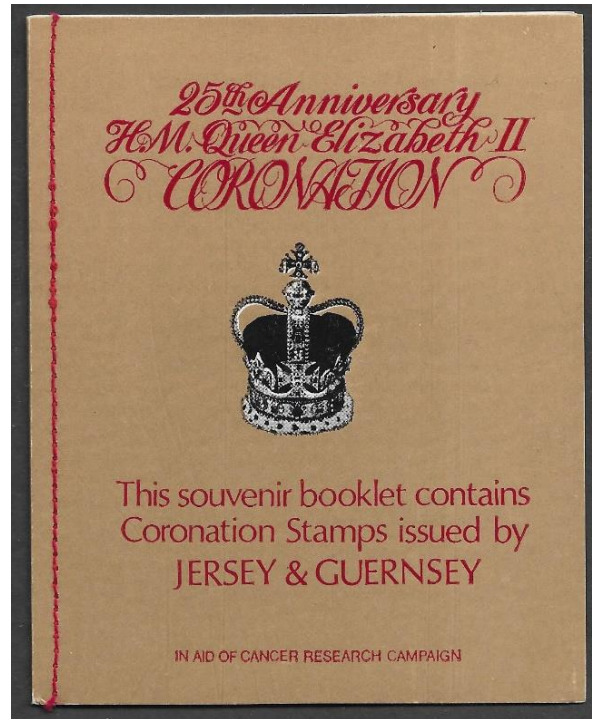


The 1954 Penrose Annual contained articles on QEII focusing on the Coronation and about Stamp design and production, including the Coronation issue. Shown here are the black prints and pages from the book.

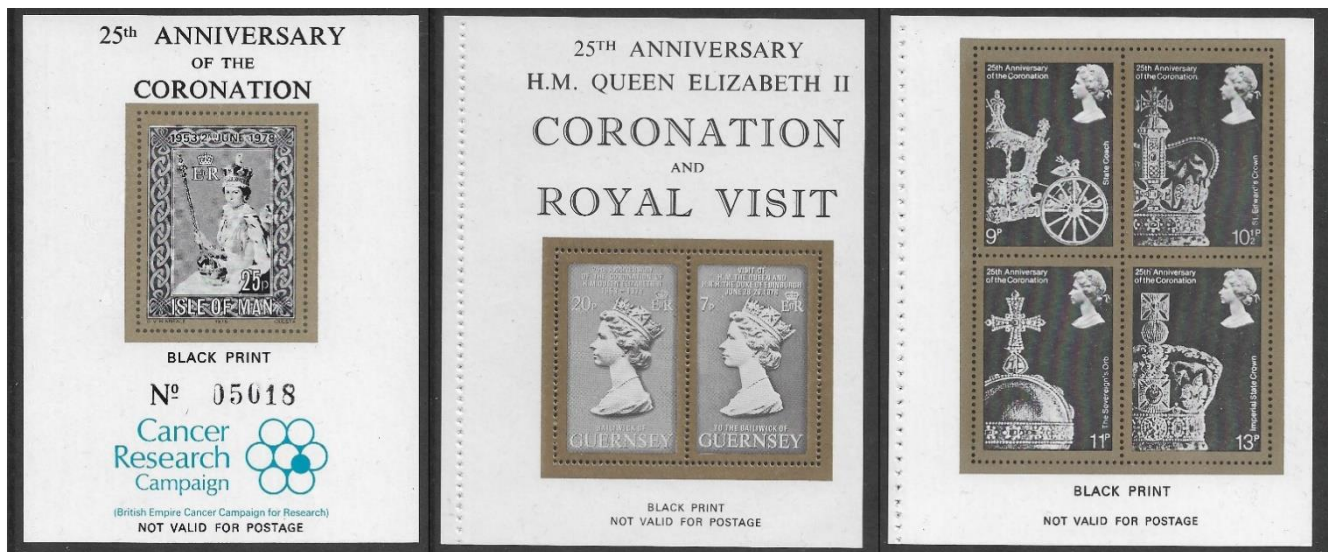
Like their postage counterparts, Cinderella stamps abound at times of celebration and commemoration. So, many stamps and sheets can be found for the Queen's Jubilee in 1977 or commemorating the Coronation a year later. Events on such days would see souvenirs printed to offset some of the cost or to raise funds for charitable purposes.

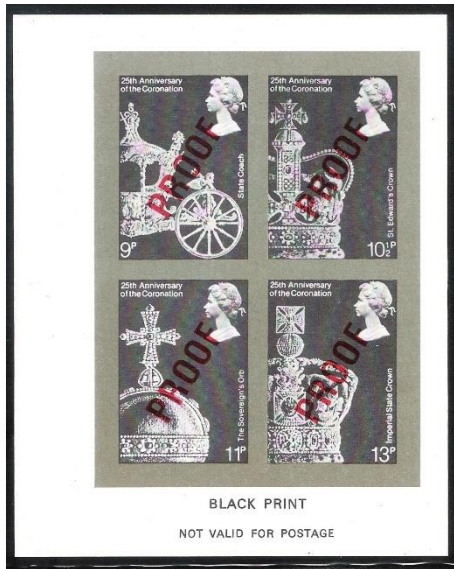
I remember back in 1977 the streets in the area of Shrewsbury where I was living at the time, all had parties using the whole length and width of the road. We would all make food and share everything.....great days. Below are some items from 1977-78.

Right. A booklet to commemorate the 25th Anniversary of the Coronation from Jersey & Guernsey. Booklets with similar covers were issued for the Isle of Man and the British Post Office. Produced in Aid of the Cancer Research Campaign.



Below. Each booklet contained some postage stamps and a black print. Here are examples of the black prints from each one with and without the CRC inscription & logo.





Left. Proof copies of the Black prints exist overprinted in red. All are Imperforate.

Below. Labels produced by South West Printers of Exeter for the Silver Jubilee. Printed in Red & Blue on various colored papers. Printed in gutter sheetlets of 4 and rouletted. Overprinted sheets 'Daily Mirror Balloon Race' were used for this special event in Exeter on June 6th, 1977.



I had long thought the next Silver Jubilee item to be a rather nice Black & White 'set' until I found out they were labels from the 1977 St. Helena sheet issue commemorating the event! Some die-hard Cinderella collectors might not include such labels/Tabs in their collections but I'll include them even though it is not a complete set!



Above. St. Helena sheet labels showing scenes from the 1953 Coronation.



A number of UK Stamp Exhibitions have been organized over the years to commemorate a Royal event for which souvenirs have been produced. I have chosen one which might have amused Her Majesty from the 1972 Silver Wedding Anniversary. The event was held at Ringwood in Hampshire and Souvenir Sheets, printed in Photo-Lithography, were produced using the Royal Mail 3p Silver Wedding Stamp (SG#916) design and errors that were found from this issue.

Left. Souvenir showing the 'transposed value and Duke without nose' error from the 1972 Silver Wedding Stamp.

Eventful but not Events!

The Queen's image on stamps comes in many different types. Probably the most popular is the iconic Machin head which first appeared on British definitive stamps back in 1967 and is still in use today. Printings, varieties and colors are many, as are collectors of this series. The stamps are affectionately known as 'Machins' after the designer Arnold Machin, who sculpted the profile of the Queen. I have chosen a few Machin heads that one would hope not to find in the mail!



Above Left. Souvenir sheet produced by Harrison & Sons to mark the first decimal Machin definitive stamps on February 15th 1971. Upper Right. One of an initial set of 17 color comparison stamps produced by De La Rue for distribution to printers of British stamps. Lower Right. Forgery of £1 definitive.

My favorite image of Queen Elizabeth on stamps is the one used for the 1962 Definitive series from Hong Kong, which was reproduced in 1963 in a souvenir for Britain's National Stamp Exhibition, Stampex. The image used was a 1955 portrait by Pietro Annigoni (1910-1988), an Italian Artist, which was much liked by the public after it went on display at the National Portrait Gallery in London. A subsequent portrait of the Queen by Annigoni found less favor!



Above. 1963 Stampex Sheet with multiple 'SPECIMEN' overprints.

More Events

The Jubilee of 1977 also delivered to Cinderella collectors items of less beauty! Total Service Stations offered an incentive to customers of Jubilee Souvenir Sheets which would be given away with purchases and for which an album was issued to display them. To this writers' eye, they are quite dull and poorly printed. I have found 10 different sheets, but do not go searching for them! I am sure there are more out there somewhere...

Right. One of a number of 2-stamp sheets produced for Total Service Stations in 1977. Issued in their own inscribed Glassine sleeve.



In 2003, the monthly British Philatelic Bulletin (issued by the Post Office) celebrated its 40th year with a souvenir sheet in the September issue. A GPO logo 'stamp' and reproductions of stamps from the reign of QEII made for an attractive item. The sheet was printed by De La Rue.

The Queen appeared on a special (large) label attached to a block of 1st class Machins in a 1996 Booklet

by Walsall Security Printers. One of a series of special booklets, this one was to celebrate the Queen’s 70th Birthday. The whole pane was also issued unfolded. The attractive label shows the Queen against a backdrop of part of Windsor Castle, her favorite Royal residence, and with a floral border.



Left. BPB Souvenir Sheet. Right. Label with Elliptical Perforations for the Queen’s 70th Birthday.

My last two events are sheets from UK Philatelic Exhibitions/Fairs. The first is a souvenir sheet from the 1964 Stampex depicting essays for an upcoming 400th Shakespeare Anniversary issue. The sheet shows various Queen’s head types across the five stamps, none of which I found particularly appealing.

The lower image does not really do the actual item justice, nor does the sheet capture the event so well. But it is a nice souvenir of a special occasion and one which I witnessed back in 2017. On Thursday, March 9th of that year Peter Boyd entered the Guinness Book of Records for the largest mosaic made up of stamps! 528,200 stamps were used for the mosaic, which commemorated 50 years of the Machin definitive stamp. It took 10 years to complete and measured 27x9 meters! The sheet was printed unfolded but is long and has two folded lines. I was there to view the mosaic at the South of England Stamp Show in Farnborough, and to buy some sheets which, due to the late printing, did not arrive on time for the opening day!



Upper. Stampex Sheet. Lower. 2017 South of England Stamp Show Souvenir Sheet showing the Machin Mosaic.

Shown below are a few more items depicting the Queen, all of the non-postage stamp variety of course! There are many, many more but that's for another time. Examples from another iconic image on revenue stamps, a fantasy item and an obtrusive overprint bring to an end this little tribute. All in honor of a great Queen.



Left. Isle of Man Revenue. DLR Key Type with Left-facing image of the Queen. Center. Fantasy 'revenue' Cinderella from Gerald King. Right. QEII Wilding block overprinted for use at the Post Office Training School.

While she did have a great interest in stamps and stamp design, and was very supportive of organized philately, the Queen was never the avid collector like her Grandfather, King George V, the Philatelist King. But she allowed the world to see her stamps, with items from the Royal collection going on display at many major Exhibitions and other events. I remember the stunning Exhibits from the Royal Collection on display at the Guildhall during London 2010, A Festival of Stamps. The Empire Mails: George V and the GPO was an Exhibition as memorable as I have ever seen. I can thank Her Majesty for that.



Cinderella Corner Giveaway

My apologies for the non-appearance of the London 2022 Giveaway, promised in an article earlier this year. Health and other issues got in the way and stamps took a back seat for much of the year. So now we can have two giveaways or one combined 'biggie,' I have not yet decided which. But all will be revealed on a Forum post once the Newsletter is published. So, keep your eyes open. I will add to the prizes offered in my previous promise to include some nice QEII items including one or two mentioned in this article.

Thanks for popping by and may I take this opportunity to wish readers a Merry Holiday Season and Best Wishes for the New Year. I hope you will take the time to write an article for the TSF Newsletter in 2023.

Londonbus1

Navigating Our Forum – Viewing Profiles

Techniques, Tips and Reminders

Accessing a Member's Profile: While the mini-profile provided next to a member's post will provide some basic details of a member, it's possible that you may find out more about a member by checking out their full profile. Some details you can find out are: their latest forum status, the date and time they registered on the forum, what topics they have posted in recently, and who their forum friends are. How much info you're able to learn about a member ultimately depends on what the member has provided for public view.

There are a couple of different methods you can use to view the profile of another member on the forum. One way is to visit the Members page by clicking the **Members** button typically found at the top menu bar of the forum. You can then use the search function on the Members page to find the member whose profile you want to view. Once you have conducted your search, simply click on their name listed on the Members page and you will be taken to that member's forum profile.

Another way to view a member's profile is to look at the Users Online list found at the very bottom of the index page of the forum. From the member list there, you can click on any of the names displayed in the Users Online / Last 24 Hours list and you will be taken to the member's profile that you choose. Finally, if you're viewing a topic and see a post by a member who you want to learn more about, simply click on the member's display name provided next to their post.

Viewing profiles isn't just limited to viewing those of other members, you can also view your own profile as well. To do this, simply click on the **Profile** button provided in the top menu bar of the forum. Once you've accessed your own profile, you can view the details you have made public to other members, and will also have the ability to modify your own profile with the **Edit Profile** button.

Profile Summary and Status Updates: The profile summary page is the first page you will see when viewing your own or another member's profile. The summary page will display some of the basic details, such as a member's display name, username, avatar image, as well as their member group or rank.

If you're viewing your own profile, just below your display name and avatar image you will see a text box that says **Enter your message here...** followed by an **Update Status** button. This area allows you to update the status that other members can see about you. One example for this would be if you plan on being away from the forum for a few days, you could update your status to note that you won't be back until a certain day.

Below the status bar, it's possible that you may see some icons displayed on the page if the member has received any forum badges. Badges can be either obtained by yourself, or gifted to you by another member of the forum. The icons you see in a member's profile will typically be representative of the member's role on the forum. For example, if you often make humorous posts on the forum, it's possible

Forum Help Guide

Please click any of the listed topics below for a detailed explanation of that topic. If you still have unanswered questions or need additional assistance, please visit the ProBoards Support Board.

User Guide

- Account Creation and Logging In
- Threads, Posts, Polls, and Attachments
- Bookmarks
- Post Options
- Search
- Calendar
- The Members List
- Avatars
- Viewing Profiles
- Your Profile Information
- Social Websites
- Profile Preferences
- Profile Privacy
- Notification Options
- Keyboard Shortcuts
- Glossary

Admins and Moderators

- General Forum Settings
- Boards and Threads
- Moderation Options
- Login and Registration Settings
- Themes and Styles
- Custom Pages
- Plugins
- Headers and Footers
- Member Groups and Rankings
- Managing Members
- Security
- Upgrading Your Forum
- Theme and Plugin Libraries

that another member will gift you the comedian badge. You can click on the badge icons in a member's profile to view more details about the badge, and who the badge was gifted from. If a member does not have any badges just yet, no icons will display on the page.

Next on the page will be some additional details about the member whose profile you're viewing. Here you may see some of the following, depending on whether or not a member has chosen to make the info public:

Latest Status: This will be the most recent status update that a member has made. If a member has not provided a status update, this will appear blank.

Web Site: If a member has provided a link to a personal or favorite website, the link to the website will be displayed here.

Birthday: Members have the option to show the full birthday, only show month and day, or can opt to not share any birthday info. What you see here will depend on how the member has chosen to share their birthday info.

Age: If a member has opted to display their full birthday in their profile, their age will be displayed on the page. If the birthday or year of birth is not made public, their age will not show.

Location: If provided, you will see the location of the member here. This info can range from something as broad as a country or state, or could give details right down to the city that the member is from. The info displayed here depends on what the member has provided in their profile. If location info isn't provided by a member, this field will not show on their profile page.

Posts: The count provided here will be the member's total post count on the forum. This will indicate how active a member has been on the forum.

Date Registered: Here you'll see the date and time that the member originally registered their account on the forum. If you're viewing the profile of the main admin account, this also serves as the date and time that the forum was originally created.

Below the personal details above, you'll see a couple of links that are associated with the member's account:

View this member's recent posts: Clicking this link will bring you to a page where you can see all of the posts that the member has made on the forum.

View this member's recent threads: This link will take you to a page that will outline all of the threads that the member has created on the forum.

Lastly, if a member is following other members, or is being followed by other members, you'll see those members listed toward the right side of the summary page. Four random members will display in each section if there are more than four members following or being followed.

Information on these and other areas may be found in the Forum's [Help Guide](#).

Support Your Forum by Writing for Its Newsletter

By Editorial Staff

The simple truth is: since all of the Newsletter material is written by members, the survival of this Newsletter is entirely dependent upon member contributions.

We welcome articles written on any area of philately, as long as they are original works.

For instance:

- How did you come to be a stamp collector? Tell us about it...
- Did you attend an interesting philatelic exhibition or stamp venue? Tell us about it...
- Do you have expertise in a particular area? Tell us about it...
- Have you had a positive or negative online buying or selling experience? Tell us about it...
- Do you belong to an interesting stamp club? Tell us about it...
- Do you have a favorite stamp? Tell us about it...

If you are able to make posts on the Forum, you have the ability to prepare articles for this publication.

In addition to supporting the Forum, submitting material provides the opportunity for recognition by the American Philatelic Society through its Articles of Distinction program.

Submitting an article is easy—all we need is the file containing the article's text, annotated with suggested image locations, and the images sent as separate files.

If you'd like to have an article published in the next issue of the Newsletter (V7.3; Apr-Jun 2023), please attach the text and image files to an email and send it to stampforum.net@gmail.com by not later than March 5, 2023. If files are too large for submission by email, use the free and secure file transfer service at WeTransfer.com. Text files in Microsoft Word are preferred.



TSF's Philatelic Library

By Steve Tomisek (tomiseksj)

The publications donated to our Forum by the [American Air Mail Society](#) (AAMS), in conjunction with the [American Philatelic Society](#) (APS), have sat idle since their arrival in mid-January. The procedures for checking out a book have been posted on the [Forum](#), along with brief descriptions of their content. The list of titles the Forum received are shown below.

That the books have remained on the shelf since their arrival is likely attributed to the requirement that members checking them out must pay the cost of postage and insurance for both delivery and return. The use of Forum funds to cover some or all of the postage cost would be inappropriate.



In an effort to ensure that this valuable Forum resource isn't squandered, I am willing, as my time permits, to entertain reasonable requests to research information contained within these publications. Requests for assistance from members who have not yet achieved full membership status, a criteria for being able to check out publications, will likely not be acted upon (unless I have an abundance of free time).

AVAILABLE TITLES

AERIAL MAIL SERVICE

AMERICAN AIR MAIL CATALOGUE, Seventh Ed.-Volume 1-3

AMERICAN AIR MAIL CATALOGUE, Sixth Edition — Volume 1-3

BALLOON POST OF THE SIEGE OF PARIS, 1870-71

CORREIO AEREO: A HISTORY OF THE DEVELOPMENT OF AIR MAIL SERVICE IN BRAZIL

GLIDER MAIL: AN AEROPHILATELIC HANDBOOK

INDEXES TO THE AIRPOST JOURNAL, Volumes 1-60, 1929-1989 and AERO PHILATELIST ANNALS, Volumes 1-25, 1953-1971 and 1975-1982

MAX - I didn't get to know him very well

NEWFOUNDLAND AIR MAIL, 1919 – 1939

O.A.T. AND A.V.2 MARKINGS - Third Edition

PERUVIAN CIVIL AVIATION

ROCKET MAIL FLIGHTS OF THE WORLD TO 1986

THE AIRMAILS OF CANADA AND NEWFOUNDLAND First Edition

THE PIONEER AIRPLANE MAILS OF THE UNITED STATES

VIA AIRMAIL: An Aerophilatelic Survey of Events, Routes, and Rates

In Closing...

My thanks go to those who have contributed content for this issue and all of the previous issues. As was stated in the last issue, if you review the names of the authors, you'll see that it is a relatively small proportion of our membership.

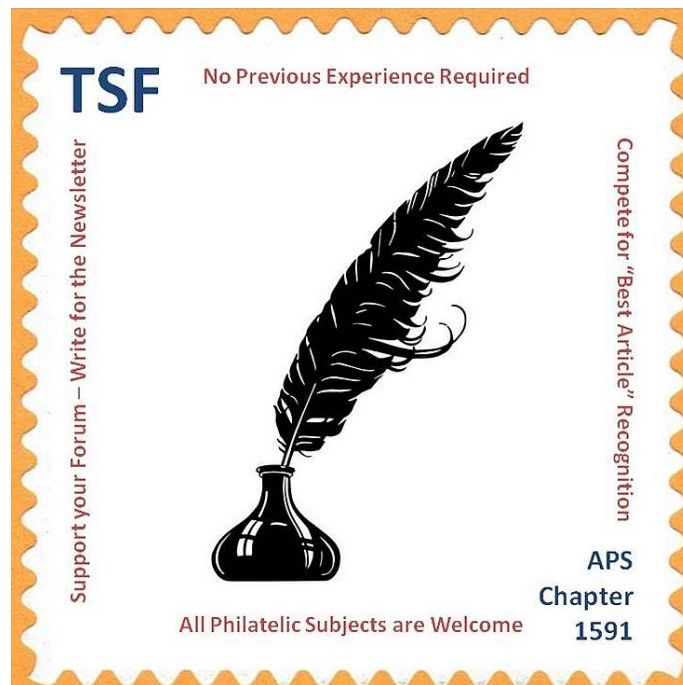
Member support is essential if we are to continue publishing a Newsletter. Any contributions of a philatelic nature will be considered for inclusion in a forthcoming issue (e.g., a catalog or book review, what I collect and why, a stamp show or bourse review, an intro to my local club, etc.).

Please consider trying your hand at writing something for publication. If you aren't sure how to go about it, contact one of the editorial staff and we'll be happy to assist.

We're on track for having each Newsletter published the week prior to the period covered. To continue meeting that target, we'd like to receive your submissions not later than March 5, 2023.

When contributing material, Microsoft Word files are preferred, with images submitted as separate files. Although we can work with PDF files with embedded images, it makes for a more tedious process.

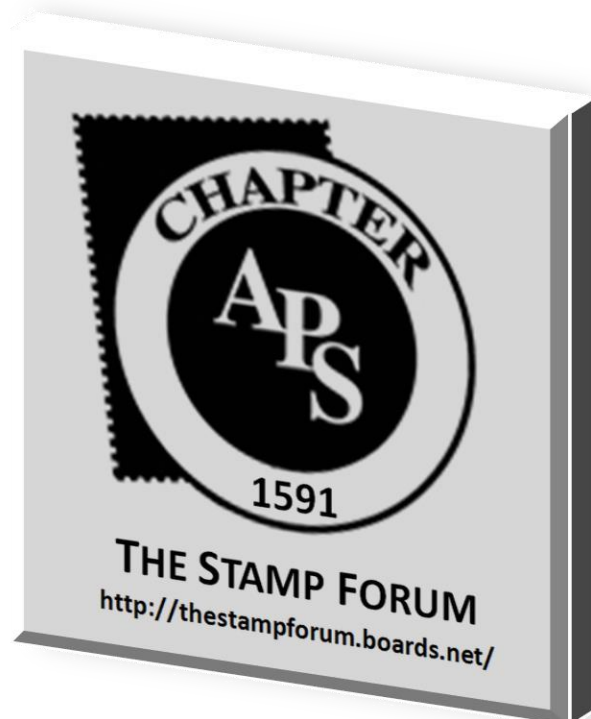
Thanks for your continued support!



The Stamp Forum became a Chapter of the American Philatelic Society on February 28, 2014. A requirement of that membership was our obligation to abide by APS's [Philatelic Code of Ethics](#).

While most of the benefits of Chapter membership are best-suited for physical stamp clubs, there are several that are applicable to us. For example, we are listed in the APS club directory, are able to participate in the [Articles of Distinction](#) program, and receive a copy of [The American Philatelist](#), the monthly journal of the Society.

If you are not an individual APS member, please consider [joining](#) the organization. If you are going to apply for membership, please indicate Chapter 1591 as your sponsor.



It's Time for a Stamp Club Meeting

Join us!

- Would you like to join a stamp club but you either can't find one or its meeting time doesn't fit your schedule?
- Would you like to discuss stamps with other collectors at any time you choose, day or night?
- Do you have questions about your stamp collection that you'd like to have help in answering?

If you answered yes to any of these questions, we can help! The Stamp Forum, Chapter 1591 of the American Philatelic Society, meets online, 24/7 at thestampforum.boards.net. Feel free to check us out. If you have questions, please send them to us at stampforum.net@gmail.com.

