

# THE STAMP FORUM NEWSLETTER

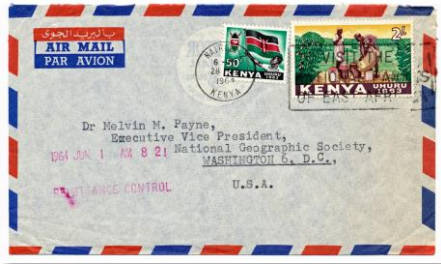
Volume 7, Issue 1

APS Chapter 1591

October - December 2022

## IN THIS ISSUE:

### STOCKHOLM STAMPING



### A STEADY STREAM OF LETTERS



### FROM THE ARCHIVES

**PLUS: 2022 APS ARTICLE OF DISTINCTION SELECTION**  
**THE FORUM'S MISSING COUNTRIES**  
**NAVIGATING OUR FORUM**  
**WRITE FOR THE NEWSLETTER**  
**TSF'S PHILATELIC LIBRARY**

#### THE STAMP FORUM NEWSLETTER

**EDITOR:** Steve Tomisek (*tomiseksj*)

**ASSISTANT EDITORS:**

Jerry Bodoff (*JerryB*)

Peter Ware (*brightonpete*)

**FORUM STAFF**

**FOUNDER:** Jack Witcher (*irishjack*)

**ADMIN/MODERATOR TEAM:**

Chris Dorn (*Beryllium Guy*)

Michael Hide (*Londonbus1*)

Ryan Davenport (*Ryan*)

Steve Tomisek (*Admin/tomiseksj*)

The Stamp Forum (TSF) Newsletter is a quarterly publication of The Stamp Forum. Opinions expressed in articles in this newsletter are those of the respective authors and are not necessarily endorsed by the Forum. The Forum cannot be responsible for the accuracy of any information printed herein.

Editorial and Forum staff may be contacted using the Forum's personal message (PM) system. The Editor and Forum Admin may also be contacted at [stampforum.net@gmail.com](mailto:stampforum.net@gmail.com).

Established in 2013, TSF is an online stamp club with a worldwide membership. The Forum is also Chapter 1591 of the American Philatelic Society. Membership is free

### Write for Your Stamp Forum's Newsletter

We are always looking for articles of a philatelic nature for publication in the Newsletter. These can vary in length from 1 page to several and can cover any topic imaginable as long as there is a philatelic connection. Well-researched articles, tips for collectors, stamp collecting memories, stamp show and philatelic book reviews, etc., are all welcome topics. Just send us a text file with some supporting image files and we'll take care of the editing and layout. The Forum and its Newsletter need your support so please help us!

## TABLE OF CONTENTS

<i>Forum &amp; APS Chapter 1591 Update (Admin)</i> .....	<a href="#">p. 2</a>
<i>TSF's 2022 APS Article of Distinction (Editorial Staff)</i> .....	<a href="#">p. 3</a>
<i>Stockholm Stamping (kasvik)</i> .....	<a href="#">p. 4</a>
<i>One Envelope from "a Steady Stream of Letters" (DavidMFrye)</i> .....	<a href="#">p. 8</a>
<i>From the AP Archives (Editorial Staff)</i> .....	<a href="#">p. 14</a>
<i>Countries Missing from the Regional Boards (Editorial Staff)</i> .....	<a href="#">p. 15</a>
<i>Navigating Our Forum – The Members List (Editorial Staff)</i> .....	<a href="#">p. 16</a>
<i>Write for the Forum's Newsletter (Editorial Staff)</i> .....	<a href="#">p. 18</a>
<i>The Forum's Philatelic Library (tomiseksj)</i> .....	<a href="#">p. 19</a>
<i>In Closing... (Admin)</i> .....	<a href="#">p. 20</a>

## Forum & APS Chapter 1591 Update

This issue marks the start of the seventh year of our Forum's Newsletter. We've managed to keep it going due to the contributions of material from our members. However, the number of submissions has waned and material submitted is typically from the small number of frequent contributors. If you haven't yet tried your hand at philatelic writing, I encourage you to do so. Please consider what you might be able to contribute for inclusion in a future issue, and then start "[putting pen to paper.](#)"



Sadly, as this issue was being prepared, Queen Elizabeth II passed away. Her passing marked the end of an era for both the British monarchy and philately, in general. Our condolences extend to the members of the Queen's family as well as to all of her loyal subjects. Several Forum members have informed me that they will be preparing tributes to Queen Elizabeth that will appear in the January – March 2023 issue of the Newsletter.

On the APS front, what is likely the most significant action is the movement of the APS StampStore marketplace to the eCommerce platform HipStamp on October 1, 2022. The impetus was an aging website, slow buyer growth, and declining sellers, submissions and sales. Members will continue to receive the member discount and work with APS staff on returns. The process for sellers remains the same. The partnership will benefit APS and increase its exposure in the stamp collecting universe.

Lastly, I'd like to congratulate Chris Dorn on his article *Philatelic Travelogue: Hunting British Postboxes* being selected to represent the Forum and Chapter as our 2022 APS Article of Distinction.

Steve Tomisek  
Forum Admin/APS Chapter Ambassador

## TSF's APS Articles of Distinction

By Editorial Staff

To date, our Forum, APS Chapter 1591, has submitted five articles for publication on the American Philatelic Society's [website](#). All have been posted and each of those has a link that will bring readers to our Forum. Our most recent submission is currently featured on the website's [Collecting Insights](#) page

In addition to the recognition afforded The Stamp Forum, the articles' authors receive a certificate of achievement from APS.

The articles chosen to represent our Forum/APS Chapter in each of the annual competitions conducted in prior years are shown below, and each may be viewed by clicking on their respective link.

- 2017 [The 1926 Madrid-Manila Flight – A Pioneering Journey](#)
- 2018 [Visiting Stamp Shops Around the World](#)
- 2019 [USS Constitution – America's Ship of State](#)
- 2020 [Philatelic Travelogue: Paris and Its Stamp Market](#)
- 2021 [SAMOA, 1840-2000: Transition from Chiefly Fiefdoms to Nationhood](#)

The 2022 selection has just closed with four articles having competed for the distinction of being selected as The Stamp Forum's 2022 APS Article of Distinction – one from each Volume 6 issue published. The article representing our Chapter for 2022 is *Philatelic Travelogue: Hunting British Postboxes* by Chris Dorn (@BerylliumGuy).

For the 2023, the same selection process will be followed. A poll will be created to allow you to select your favorite article from this issue. That poll, and the ones that will be created for Issues 2, 3 and 4, will close on August 31, 2023 at Midnight, New York time. A final poll will be posted in September to select the article that will represent our Chapter for 2023. Poll will be posted on the [Article of Distinction board](#).

If you enjoy reading the Newsletter, please show its contributors your appreciation by making your selections known.



## Stockholm Stamping

By Aaron Karp (*kasvik*)

It had been years, when The American Philatelic Society arrived in my town, Norfolk, Virginia, with the AmeriStamp Expo. This was the APS' winter stamp show, stopped in 2019 by poor finances, even before the epidemic.<sup>1</sup> But it was at Chrysler Hall, the convention center near my church. I wandered over after a service. At risk of sounding dramatic, it was Sunday, 31 January 2004.

The exhibits went right over my head. But in the sales area, I stumbled on Jay Smith, the prominent Scandinavian stamp dealer. Leafing through his sales books, there was a stamp showing Stockholm's Central Post House (Figure 1). It's a familiar sight on Stockholm's Vasagatan, just north of the main railway station. That got my attention. I bought a Facit catalogue and, after a break of thirty years, went back at it.

I have been collecting Swedish stamps ever since. Work takes my wife and I back to Stockholm every couple years, pandemic permitting. But thanks for this article really go to The Stamp Forum. TSF made my 2022 summer visit a chance to catch up on the Stockholm stamp scene. Let me tell the tale, with photos and stamps.

### Typical Beginning, Typical Break

Growing up in Arkansas, none of the adults I knew collected anything except art. My parents were architects. Back then architects were frustrated artists. Maybe that's where I got the collecting idea. It certainly is why, even as I child, I took design seriously.

Collecting stamps was still in the air in the 1970s, advertised in *Boy's Life* and Sunday newspaper supplements. I earned the stamp collecting merit badge. A few classmates collected, too. My uncle bought plate blocks in the late 1960s and 70s, which he gave to me and immediately quintupled the value of my collection. His gift also marked the end of my childhood interest. No way I could keep up with that.

After graduate school and a stint in the army, I was on the staff of a research institute in Stockholm, long enough to marry and have children. None of this brought me back to stamps. With a young family there was barely enough time to read a newspaper. Only after moving back to America, with the children considerably older, did serendipity strike at Chrysler Hall.

### The Catalyst: Boberg's Palace

The stamp that caught my attention is navy blue. The building it portrays actually is ocher. Opened by Sweden's King, Oscar II, in 1903, the Central Post Office (Centralposthuset) is a neo-Gothic monument designed by Ferdinand Boberg, architect of grand buildings throughout Sweden in the early Twentieth Century (Figure 2).<sup>2</sup>



Figure 1. Sweden's 1903 Central Post Office 5 Kr blue, Facit 65/Scott 66.



Figure 2. Centralposthuset, Stockholm, 2018. Source: Wikimedia

<sup>1</sup> Michael Baadke, Ameristamp Expo changes mean new plans for 2020', *Lynn's Stamp News*, 8 March 2019.

<sup>2</sup> Ann Thorson Walton, *Ferdinand Boberg, Architect: The Complete Work*. Cambridge, Massachusetts: MIT Press, 1994.



The vaulted atrium, a customer service desk resembling a church sanctuary, must have been intended to give a religious aura to the postal experience. As the stamp in Figure 3 shows, that's how the Swedish Post Office (Post Verket) saw it. Part of a series commemorating the UPU centennial, it was engraved by Czeslaw Slania, portraying the building where he worked.<sup>3</sup>



**Figure 3.** Invitation to whisper; Stockholm Central Post Office atrium, 1974. Facit 872/Scott 1085.

The idea of massive temples to the mail was irresistible at the time, celebrations of sovereign nationalism and progress. Comparable buildings—the airports of their era—were going up all over the world. Comparable stamps—the self-given awards of the era—were being issued the world over, too. No wonder stamp collecting was the hobby of kings.

A century after its opening, in 2004, Posten AB, the private company that took over in Sweden, marked the building's centennial with a flourish; they moved out. The customer service desk had closed years before. Boberg's postal palace was transferred to the Swedish National Property Board, the country's repository for white elephants. Today it is just another conference center, retaining nothing of its past except its name.

The abandonment was illustrative of the broader change, all too familiar to anyone with philatelic interest. The internet, competition from private delivery and privatization of post offices worked its magic everywhere. Major post offices are finding new purposes everywhere, most famously in Milan and New York.<sup>4</sup> In 2001 Posten AB (now part of PostNord) closed all its post offices in Sweden.<sup>5</sup> They were replaced with Post Agencies, broom closet offices in grocery stores. They also sell cigarettes and lottery tickets.

### The Post Museum

When the Central Post Office opened, the old building was preserved as the Post Museum. It was built as a private house for Stockholm's mayor in 1650. It was bought by the Post Office in 1719, and served until 1875. While the uninspired interim building that immediately replaced it was forgotten, an affectionate use for the old building seemed in order.

Except for the top floor—where the library is today—it's not naturally well-lit. Generations of clerks must have hated the difficulties it created for their work. The engraved Cinderella from 1981, commemorating the museum's seventy-fifth anniversary, shows the building as portrayed in an 1840s lithograph (Figure 4).



**Figure 4.** The Swedish Post Museum on a 'test stamp', Cinderella or Bältespänna from 1981.

The image is old, but misleading. To make the building look monumental, the artist created the impression of space in front of the building. In reality, no such view is

<sup>3</sup> Thorsten Sandberg, 'Anekdoten: Mästergravören i centralposthuset', *Kulturvärden*, no. 2020, pp. 14-21.

<sup>4</sup> Michael Kimmelman, 'Moynihan Train Hall: it's stunning. and, a first step', *New York Times*, 11 January 2021; 'Milano, ex palazzo Poste di piazzale Cordusio (sede Starbucks) venduto a 246,7 milioni', *MilanoToday*, 29 December 2020.

<sup>5</sup> Jane Croft and Harry Dempsey, 'Post Office struggles to recover from a bruising scandal', *Financial Times*, 23 August 2001.

possible. It's on Lilla Nygatan—Little New Street—*little* because it is claustrophobic. This is Stockholm's Old Town (Gamla Stan), not its narrowest medieval lane, but even the Baroque parts are tight.

The 1990 stamp (Figure 5, Facit 1606/Scott 1810), part of a Europa series featuring post museums, is more truthful, more cramped. I especially like the woman and boys at the museum door. Already in 1990 philately was consumed with anxiety.

Unfortunately for me, the Post Museum was closed for repairs most of 2022. Oh, come on! The 'newer' parts of Stockholm's Old Town, like Little New Street, are built on Baroque-era landfill, largely garbage. It took four hundred years, but much of it is subsiding. The Post Museum is a victim, closed for foundation work.<sup>6</sup>



Figure 5. A more realistic view.

Maybe you will have more luck. The exhibits are impressive. If you go, be warned; Sweden's greatest stamp treasure, the unique Three Shilling Yellow, is in the private collection of Securitas billionaire Gustaf Douglas.<sup>7</sup> For me, the great treasure is the museum library, stocked with expensive stamp magazines.<sup>8</sup>

### A Few Things Missing

I can remember from the late 1980s and early 1990s, when Stockholm had plenty of stamp stores. There was no stamp district. They were scattered all over town, with about a dozen in the city center. As recently as the early 2000s, there were two stamp stores near the Post Museum. With one exception, they're all gone (Figure 6).



Figure 6. Empty: typical Stockholm stamp store in July 2022. Author's photo

The fate of Stockholm's stamp stores is similar to other major cities. Once upon a time, many cities had an active philatelic quarter. Stamp dealers, like every merchant, tended to congregate. Back when transportation costs were high, and communications poor, a central location was the easiest way to be where the action was.

That business model stopped working decades ago. Renowned centers of philatelic activity such as New York's Nassau Street and The Strand in London are shadows of their former selves. In Paris, the Rue Drouot seems healthy, albeit reduced.<sup>9</sup> The internet, high rents and a declining collector base push dealers to retire or reinvent themselves on-line. A few cities keep weekly stamp markets, especially in Argentina, France and Spain.

But not Northern Europe. In Stockholm, the last orphan stamp store is Contenta Frimärken, owned by Dag Svinhufvud. He had a downtown location, until pushed out years ago, but he's still active, a hero to anyone with enough memory.<sup>10</sup>

<sup>6</sup> Sujay Dutt, 'Subsidence hits Old Town buildings built on trash', *Sveriges Radio*, 4 February 2022.

<sup>7</sup> Julia Lee, 'Treskilling Yellow is back in the hands of a philatelist', *Stamp Magazine*, 1 November 2013

<sup>8</sup> Jeff Stage, 'Stockholm's Postmuseum displays Swedish philatelic treasures', *Lynn's Stamp News*, 2 May 2019.

<sup>9</sup> Elaine Sciolino, 'In Paris, passion battles the decline of stamp collecting', *New York Times*, 18 October 2017.

<sup>10</sup> Jonas Hällström, 'Välkommen in! Två 'gamlingar' på samma gata', *Nordisk Filateli*, no. 2, 2021, pp. 34-35.

Stockholm has a healthy stamp scene, but it moved to the upper floors, where the auction houses lurk. It is easy for a visitor to miss entirely. Stockholm alone has about a half-dozen active auction firms. Why have auction houses proliferated while stores and markets evaporated? Lower fixed costs, I guess.

When it comes to stamps, Sweden has become less centralized. Many of the biggest auction firms are in regional centers like Gothenburg and Malmö. The most active Swedish stamp clubs tend to be in small towns. In other words, philately no longer is structured around market size. It happens where there are entrepreneurs.

One of my favorite Swedish stamp auctioneer lives in Bangkok. We're all more connected than ever. Location doesn't matter. But, of course it does. The loss of store windows is nothing to celebrate. It makes stamp collecting harder to see. Even if the kids never raise their noses from the mobiles, there is a cost to the loss of scenery. I greatly appreciate on-line clubs like The Stamp Forum. They make all the difference for me and many others too.

---



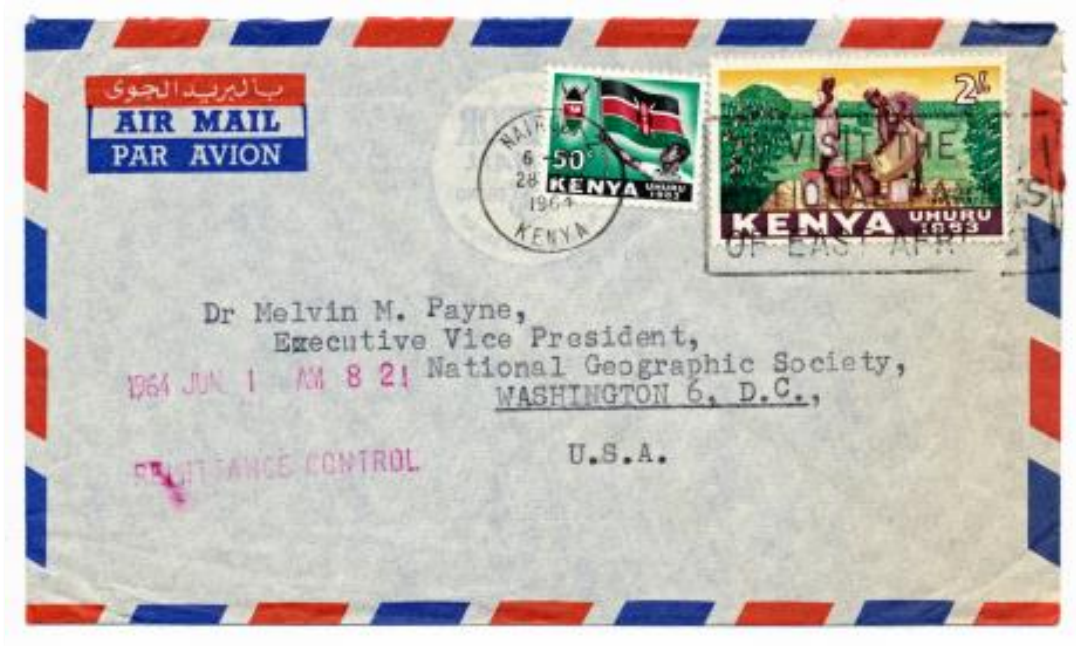
Plans are underway to turn Boston into the world's center of philately for eight days in 2026, as the twelfth international philatelic exhibition of the United States gathers at the [Boston Convention & Exhibition Center](#) (BCEC). To be held during Memorial Day week (May 23–30, 2026) in the [Seaport](#) section of the city, Boston 2026 World Expo will be a significant part of the country's 250th anniversary festivities. If you'd like a chance to win an unsigned copy of the first show label sheetlet, send a PM to @tomiseksj and mention this Newsletter giveaway. The winner will be randomly selected during December.



## One Envelope from a Steady Stream of Letters

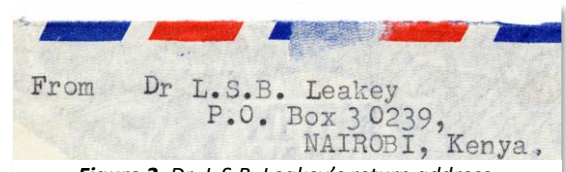
By David M. Frye (DavidMFrye)

### Introduction



**Figure 1.** Nairobi, Kenya, to Washington, D.C., United States of America, 28 May 1964. Two stamps from Kenya's Uhuru 1963 Series paid the prevailing airmail rate for a single-weight letter to North America (original: 153.0 mm × 89.0 mm).

Colorful stamps. Slogan postmark. Intriguing handstamp. Manufacturer's logo. Recognizable addressee. In at least five ways, the envelope depicted in Figure 1 offers entrées for study. But flipping over the envelope reveals a detail that can launch the sixth point of departure for telling how this postal artifact fits into the history of East Africa in the 1960s. The backside shows a typed return address, highlighted in Figure 2.



**Figure 2.** Dr. L.S.B. Leakey's return address.

This detail helps to turn a postal-history story in a direction that encompasses both personal and professional elements. The envelope clearly identifies the sender and the recipient. These names, along with the date embedded in the postmark, provide the first hints for uncovering the role the correspondence may have played in the mailed conversation between the two gentlemen whose names appear on the envelope.

### Melvin M. Payne

The typed address on the front of the air-mail letter identifies the recipient, Melvin M. Payne, as the Executive Vice President of the National Geographic Society. Payne's parents died when he was ten. An aunt and uncle cared for him until he grew to manhood (AAPRA, 1990). According to his obituary in *The New York Times*, "he began work for the society as a secretary in 1932 when he was 21 years old" (Fowler, 1990). He became the society's executive vice president and secretary in 1962 and advanced to its



presidency in 1967 (Barnes, 1990). He retired in 1987 (Fowler, 1990). When he died of pneumonia on 6 October 1990 at seventy-nine, he was the society's chairman emeritus. The obituary noted,

*He was a major supporter of Capt. Jacques-Yves Cousteau's underwater explorations, of the first American ascent of Mount Everest, of Dr. Louis Leakey's search for early man in East Africa and of Jane Goodall's study of wild chimpanzees (Fowler, 1990).*



The photograph in Figure 3 shows a younger Melvin Payne listening to Jacques-Yves Cousteau present plans for *Calyпсо*, his research vessel, to the National Geographic Society's leaders.

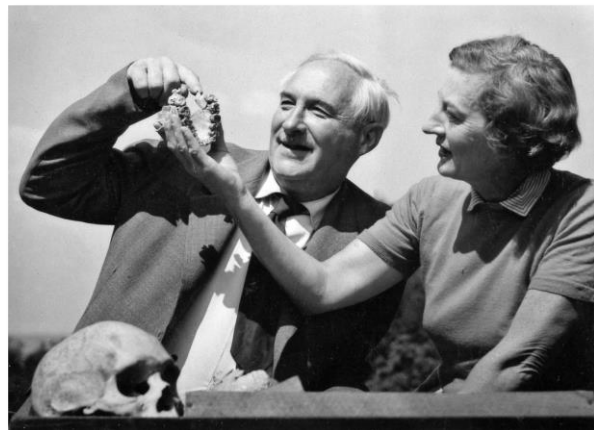
**Figure 3.** Melvin M. Payne (right center, striped tie) and Melville Bell Grosvenor, president of the National Geographic Society (seated, bow tie), listen to Jacques-Yves Cousteau (left of center, pointing) discuss his ship, *Calyпсо*, at the headquarters of the National Geographic Society, Washington, D.C., in 1955 (MIT Museum, 1955).

#### Dr. Louis Seymour Bazett Leakey

The envelope's sender, Dr. Louis S.B. Leakey, typed his return address on the back flap. When he mailed the letter in 1964, he had already known a long history of living in East Africa. As one biography states,

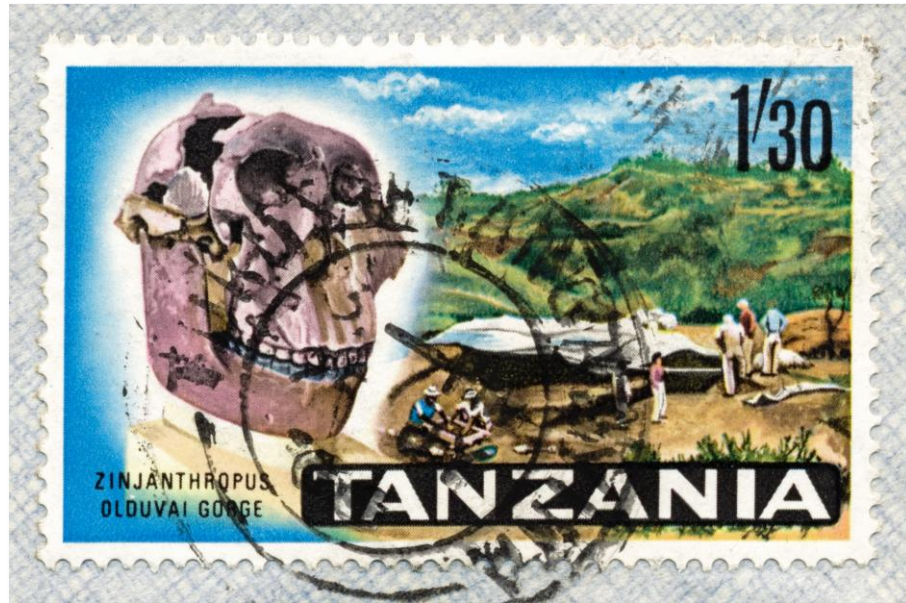
*Paleontologist, archaeologist and anthropologist Louis Leakey was born at Kabete, Kenya on August 7, 1903. His British parents were missionaries sent to live among the Kikuyu, Kenya's largest tribe. Leakey was the first white baby the Kikuyu had ever seen and he learned their language before he could understand English. He was secretly initiated as a member of the tribe at the age of thirteen and remained a champion of the Kikuyu (and an expert on their culture) for the rest of his life (Turkana Basin Institute, 2021).*

Early on, his work raised awareness of the pivotal role that East Africa had played in humankind's evolution. As one scholar noted, "By 1932, Leakey's Kenyan sites had established East Africa as the cradle of humankind, shattering the previous academic consensus that hominid origins lay in Asia" (Hart, 2008). After divorcing Frida, his first wife, Leakey married Mary Nicol in 1937. She had created the illustrations for *Adam's Ancestors: The Evolution of Man and His Culture*, Leakey's 1934 work. Louis and Mary Leakey appear together in the photograph in Figure 4.



**Figure 4.** Louis and Mary Leakey (Turkana Basin Institute).

While Louis Leakey had first visited Tanganyika's Olduvai Gorge in 1931, twenty-eight years passed until Mary uncovered the fossilized cranium of a hominid given the name *Zinjanthropus bosei* and later renamed *Paranthropus bosei* (Parkinson, 2018). This famous discovery provided the featured image on the TSh 1/30 postage stamp design of Tanzania's 9 December 1965 series, shown in Figure 5.



**Figure 5.** *Zinjanthropus, Olduvai Gorge.* The TSh 1/30 stamp from Tanzania's 9 December 1965 series depicted the fossil discovered by Louis and Mary Leakey (Parkinson, p. 29).

Louis Leakey wrote sixteen books, several of which reached publication after his death from a heart attack on 1 October 1972. His family also carried on his work. Richard, one of Louis and Mary's children, became a paleoanthropologist. He and Maeve, his wife, had a daughter, Louise, who represents the third generation of Leakeys to engage in paleoanthropological research in East Africa.

### Correspondence

The envelope bearing the names of these two men—Leakey and Payne—no longer contains the 1964 letter that passed between them midyear. Even so, the timing of the letter's mailing provides enough detail to support a suggestion of the general topic of the correspondence. Melvin M. Payne's name appears in the byline of an article published in *The National Geographic* in February 1965. The lead paragraph of this piece, "The Leakeys of Africa: Family in Search of Prehistoric Man," invites the reader to follow the author on the path set by the Leakey family. Payne writes,

*For three years, a steady stream of letters and reports from Nairobi had been crossing my desk—brilliant, fascinating documents chronicling a National Geographic Society-supported search for the remains of earliest man at various sites in East Africa. All were signed by Dr. Louis S. B. Leakey or his wife Mary Leakey; all fired me with a desire to visit these dedicated scientists and see their work firsthand (Payne, p. 197).*

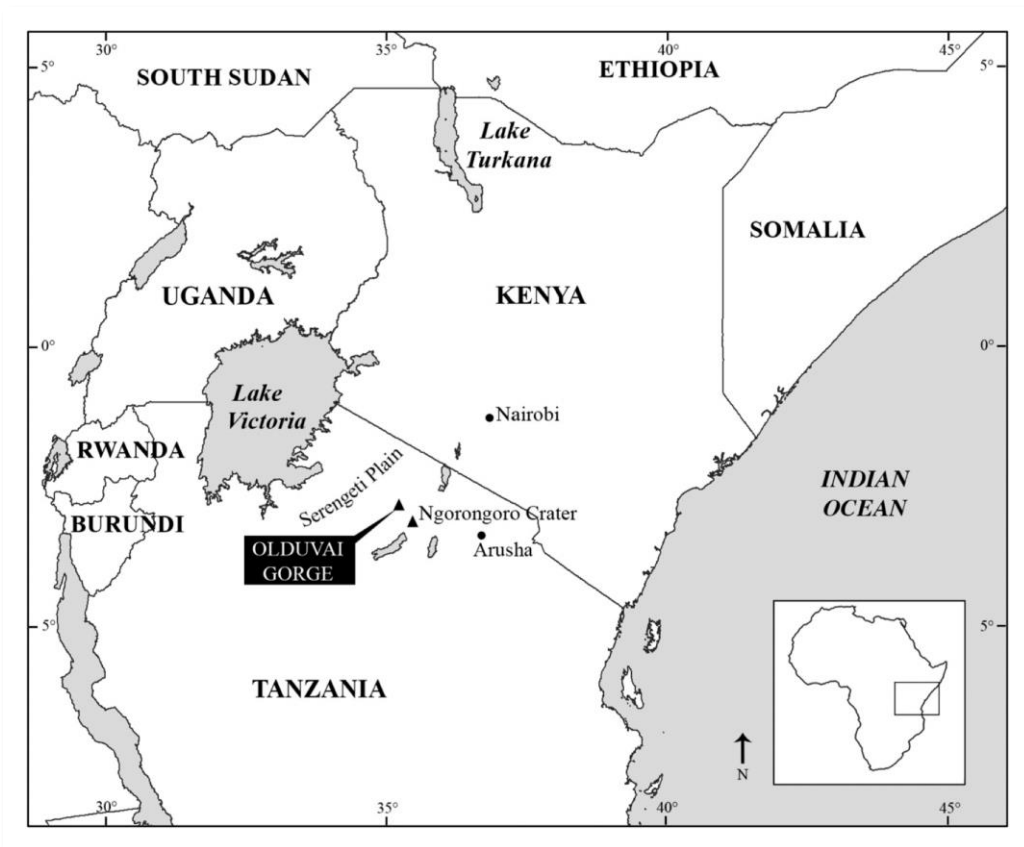
Given the article's appearance in the February 1965 issue of the magazine and the envelope's 28 May 1964 postmark from Nairobi, concluding that the envelope had contained one piece of correspondence



in Leakey's "steady stream of letters and reports from Nairobi" seems reasonable. The sender and recipient appear together in a photograph, Figure 6, featured in Payne's article.

**Figure 6.** "Trophies of a fossil hunt. Dr. Leakey holds a jaw of *Homo habilis*, believed by many scientists to be the earliest known direct ancestor of modern man. Author Melvin M. Payne, the Society's Executive Vice President, holds a massive jaw of *Zinjanthropus*, another prehistoric hominid" (Payne, 1965, p. 197).

The map displayed in Figure 7 shows the locations of the Olduvai Gorge east of the Serengeti and west of Arusha in northern Tanzania, while Nairobi, the site of Louis Leakey's business operations and his point of mailing, lies in Kenya, northeast of the Olduvai Gorge.



**Figure 7.** Relative positions of Nairobi, Kenya, and the Olduvai Gorge, Tanzania (Parkinson, 2018).

Later correspondence, represented by the envelope shown in Figure 8, reveals that the Leakey family, represented by Louis's son, Richard, worked out of The National Museum, Nairobi. Melvin Payne, in turn, had, by 1970, become the National Geographic Society's president.

As an aside, it is worth noting that the Society appears to have logged incoming correspondence with timed and dated "Remittance Control" markings. While these markings most likely served as means for the Society to document its business, they now help to indicate the time required for these letters to have



traveled through the mail from Nairobi to Washington. The two envelopes, mailed in 1964 and 1970, took only four days to make their way from the Nairobi post office to the Society's Washington offices.



**Figure 8.** Richard Leakey, The National Museum, Nairobi, Kenya, to Melvin M. Payne, National Geographic Society, Washington, D.C., 25 June 1970 (original: 137.0 mm × 108.5 mm).

## Conclusion

An envelope that presents the typical mid 1960s air-mail indicators for a letter sent from Kenya to a foreign destination traveled between two figures who shared a history of interest in the paleontological research centered in East Africa. Melvin M. Payne and Louis S.B. Leakey, National Geographic Society executive–author and paleoanthropologist, respectively, let their conversation flow in a “steady stream of letters” that marked their mutual involvement in research to uncover the roots of humanity sunk deep into the soil and stone of East Africa.

## References

- AAPRA: American Academy for Park and Recreation Administration, “Recipient Biography: Melvin M. Payne,” November 1990, <https://aapra.org/Awards/Pugsley-Medal/Recipient/Biography/Id/96>; accessed 28 March 2021.
- Bart Barnes, “National Geographic Chairman Melvin M. Payne Dies at 79,” <https://www.washingtonpost.com/archive/local/1990/10/09/national-geographic-chairmanmelvin-m-payne-dies-at-79/28eece18-f9a0-472d-a287-340467322eae/>; accessed 28 March 2021.
- Glenn Fowler, “Melvin M. Payne, 79, Chairman of National Geographic Society,” *The New York Times*, October 9, 1990, p. B8, <https://www.nytimes.com/1990/10/09/obituaries/melvin-mpayne-79-chairman-of-national-geographic-society.html?searchResultPosition=2>; accessed 28 March 2021.

- Thomas Hart, "Who should own Kenya's heritage?", *Kenya Past and Present*, Issue 37, 2008, pp. 13–25, <https://www.kenyamuseumsociety.org/wpcontent/uploads/kpp/1837%20KMS%20Kenya%20Past%20and%20Present%20Issue%2037.pdf>; accessed 28 March 2021.
- MIT Museum, "Pacific Ocean project, National Geographic Society (Washington, DC) - Jacques-Yves Cousteau, M. Grosvenor, Melvin M. Payne, 1955," <https://webmuseum.mit.edu/detail.php?module=objects&type=related&kv=86476>; accessed 28 March 2021.
- Jennifer A. Parkinson, "Revisiting the hunting-versus-scavenging debate at FLK Zinj: A GIS spatial analysis of bone surface modifications produced by hominins and carnivores in the FLK 22 assemblage, Olduvai Gorge, Tanzania," *Palaeogeography, Palaeoclimatology, Palaeoecology*, Vol. 511, 2018, pp. 29–51, <https://doi.org/10.1016/j.palaeo.2018.06.044>; accessed 28 March 2021.
- Melvin M. Payne, "The Leakeys of Africa: Family in Search of Prehistoric Man," *National Geographic*, Vol. 127, No. 2, February 1965, pp. 194–231.
- Turkana Basin Institute, "Leakey: A Century of the Family in East Africa," [www.leakey.com](http://www.leakey.com); accessed 28 March 2021.

#### About the Author

David M. Frye collects items to inform his study of modern United States postal history and southern and eastern Africa's post-colonial postal history. His writings have appeared in *The Airpost Journal*, *Auxiliary Markings*, *B.E.A. — The Bulletin of the East Africa Study Circle*, *Forerunners*, *The Journal of the Rhodesian Study Circle*, *The Miasma Philatelist*, *Postage Due Mail Study Group Journal*, *Postal History Journal*, *The Postal Label Bulletin*, *The Stamp Forum Newsletter*, *The United States Specialist*, *Vatican Notes*, and *The Vermont Philatelist*. A past member of the Board of Directors of the Postal History Society, he lives in Franklin, Massachusetts, and works in nearby Framingham as a clerk for the U.S. Postal Service.

---

**Join APS**  
Begin receiving member  
benefits today!

**Join Now** ▶

## From the Archives – A Window to the Past

By Editorial Staff

### WHAT IS AN ADVANCED COLLECTOR?

Nearly all of us have some conception of what is implied by the term advanced collector; with some the mental image is less distinct and defined than with others, while to a few of the youngest collectors this divinity—the advanced collector—is encircled with a halo of so exceeding brightness that it obscures him from their gaze.

Many collectors who, while by no means novices in philately, but who on the contrary, are possessed of albums displaying plethoric symptoms occasioned by filled pages and bulging covers, do not deem themselves fit to be distinguished by the title of advanced collectors. They cherish ideas of what they consider the ideal advanced collector, but these same ideals vary in great degree; the model advanced collector of one person's fancy differing in essential respect from that of another's creation.

It is generally conceded that the number of varieties in one's collection exercises but little influence upon one's ranking in philatelic classes. A philatelist could possess a collection numerically very large, but yet this mere fact would not elevate him to the realm wherein the advanced collectors hold sway. He may be a mere accumulator of stamps, who is well equipped financially to purchase any specimens that are not represented on the pages of his album, and to obtain any rarities to which his fancy inclines; but unless he study his stamps and that too, not in a desultory superficial manner, he must remain without the charmed circle of advanced collectors.

There is a very large division of philatelists in possession of the resources and other requisites who, did they desire so, could gain admittance into the body of advanced collectors without difficulty, but they rebel at the thought of making their hobby the subject of study of an exacting and scientific nature. As their hobby, philately meets all reasonable demands, but when they wish to pursue a study, they believe that in the generally accepted curriculums—*curricula*, if you prefer—there are far more worthy studies.

Now-a-days even the average collector gives a share of his attention to watermarks, for he is compelled to do so for self-protection; he does not propose exchanging or selling a stamp with a rare watermark without knowing the real value of the specimen he disposes of; therefore, he has acquired a fair knowledge of watermarks, only the very rarest varieties and variations being beyond him. So it is necessary the advanced collector have far more than a passing knowledge of watermarks. Then too, the more marked variations of perforation, designs, etc., are known to, even though they may not be collected by the ordinary collector, and in order for the advanced collector to fully justify his right to the title it is required that his acquaintance with such varieties be extended and thorough.

The advance collector may be a specialist or a general collector, though it appears that specialism would afford a more congenial field for the student than general collecting, for by restricting the limits of the collection, the rays of the philatelist's attention could be concentrated on a comparatively small spot, and so illumine it that new philatelic *data* may be discovered by the investigator.

When the philatelist begins to experience pleasure in endeavoring to reconstruct sheets of—for illustration—early Nevis and Sydney views, he may be said to have been graduated into the ranks of advanced collectors.

To recapitulate, the advanced collectors are those, either general collectors or specialists, who regard philately much more seriously than the rank and file of collectors do, and who look upon stamp collecting not alone as a satisfactory and pleasant pursuit, but as a subject worthy deep attention and exhaustive study, and who, in special lines at least, distinguish between the most minute differences of paper, watermark, perforation, shade of color, etc. These are the advanced collectors, of whom you hear oftener than you see them in *propria persona*.

C. E. SEVERN.

The above article appeared in the December 1, 1894 issue of *The American Philatelist* (V8 p.10)

If you find articles such as this of interest, you may find more in The American Philatelist Archive, hosted by Smithsonian Libraries, at <https://library.si.edu/digital-library/book/american-philatelist>.



## Countries Missing from the Regional Boards

*By Editorial Staff*

Here is the current listing of countries that have not yet been added to the Forum's regional boards. Should you collect any of these areas and would like to be able to post in a country-specific sub-board, send a PM with your request(s) to @tomiseksj and the board(s) will be created.

Annam and Tonkin	Kionga
Bangkok	Kiribati
Bosnia and Herzegovina (Croat Administration)	Macao
Bosnia and Herzegovina (Serb Administration)	Madeira
British Central Africa	Mariana Islands
British Indian Ocean Territory	Marienwerder
Bushire	Mayotte
Canal Zone	Mesopotamia
Cape Verde	Moldova
Caroline Islands	Nevis
Castellorizo	New Republic
China, People's Republic of	Norfolk Island
Cochin China	Nossi-Be
Cocos Islands	Penrhyn Island
Corfu	Philippines (U.S. Administration)
Cuba (U.S. Administration)	Ponta Delgada
Cyrenaica	Portuguese Congo
Dalmatia	Quelimane
Diego Suarez	Ras Al Khaima
Dubai	Rio De Oro
East Africa and Uganda	Rio Muni
Eastern Rumelia	St Kitts
Elobey, Annobon and Corisco	Ste. Marie De Madagascar
Far Eastern Republic	St. Vincent
French Congo	Saseno
French Morocco	Senegambia and Niger
French Sudan	Shanghai
Fujeira	Sharjah & Dependencies
Funchal	Siberia
German East Africa	South Georgia
German New Guinea	South Moluccas
German South West Africa	South Russia
Gilbert Islands	Tahiti
Grand Comoro Island	Thrace
Great Britain, Alderney	Timor
Grenada Grenadines	Tobago
Guadeloupe	Trinidad
Guam	Tripolitania
Horta	Umm Al Qiwain
Italian East Africa	United States: Confederate States
Italian Socialist Republic	West Irian
Kenya, Uganda, Tanzania	Yemen, People's Democratic Republic
Kiauchau	

## Navigating Our Forum – The Members List

*Techniques, Tips and Reminders*

### Changing the Order of Listed Members

If you are logged in to the forum, you can view the complete list of registered members by clicking on the **Members** button, typically found in the top menu bar of the forum. Once there, you'll notice that the list of members has 6 different columns: Name, Username, Group / Rank, Posts, Date Registered, and Last Online.

By default the member list will be ordered by members' display names, but you can re-order the list based on one of the other columns simply by clicking the column heading. Below is a list of each heading and how the member list will be ordered when clicked:

**Name** - Clicking this column heading will order the list by display name in alphabetical order. The list will reverse order by display name when clicked again.

**Username** - Clicking on the Username column heading will order the member list alphabetically based on the username of members. Clicking once more will reverse the order.

**Group / Rank** - When this heading is clicked, the member list will be ordered alphabetically based on the member rank and group names that the forum has. This will allow you to quickly see which members are part of a certain member group or rank on the forum. Clicking the heading once more will reverse the order.

**Posts** - Clicking the Posts heading will order the member list based on members' post counts. This allows you to see who has participated the most (or the least) on the forum very quickly. Clicking the heading once more will reverse the order based on the post counts.

**Date Registered** - When you click on this heading, the members list will be ordered based on the members' registration dates. You can use this to see who the very first members were on the forum, as well as who the most recent members are. Clicking the heading once more will reverse the members list based on registration date.

**Last Online** - If you click on the Last Online heading, you can order the member list based on the last time each member has logged into their account. This will allow you to see what members have been active on the forum most recently, or to view which members have not visited the forum in a while. Clicking on the heading once more will reverse the members list based on the last time they logged into their accounts.

### Searching and Filtering the Members List

While you can order the members listed based on the different columns provided on the members list page, there might come a time where you need to search for one or more specific members. You can find a member more quickly using the Search bar on the members page, or by using the **View All** drop-down

## Forum Help Guide

Please click any of the listed topics below for a detailed explanation of that topic. If you still have unanswered questions or need additional assistance, please visit the ProBoards Support Board.



### User Guide

- Account Creation and Logging In
- Threads, Posts, Polls, and Attachments
- Bookmarks
- Post Options
- Search
- Calendar
- The Members List
- Avatars
- Viewing Profiles
- Your Profile Information
- Social Websites
- Profile Preferences
- Profile Privacy
- Notification Options
- Keyboard Shortcuts
- Glossary

### Admins and Moderators

- General Forum Settings
- Boards and Threads
- Moderation Options
- Login and Registration Settings
- Themes and Styles
- Custom Pages
- Plugins
- Headers and Footers
- Member Groups and Rankings
- Managing Members
- Security
- Upgrading Your Forum
- Theme and Plugin Libraries

menu found just above the first listed member on the Members page.

If you can recall a word used in a members display name, or even just a couple of letters, you can use the Search function found toward the top-right hand corner of the Members page. You'll notice that as you begin typing, the members list will dynamically update as you type providing you with relevant results based on what you are typing. If you need to refine even more, you can click on the magnifying glass icon found to the right of the search bar on the page, and the pop-up window that appears will allow you to filter based on a members post count and/or registration date.

If you need to find more than one member, you can use the **View All** drop-down menu to sort the members list by the following:

**View Staff** - This will update the members list to only show staff members of the forum.

**View Following** - This option will update the members list to only show the members that you are currently following.

**View Followers** - With this option selected, you'll see a list of members who are using the follow feature to follow your forum activity.

**View Friends** - If you are following someone who is following you back, they are considered your friend on the forum. This option will update the members list to show your forum friends.

**View Online Now** - This selection will update the member list to only show you which members are currently online on the forum. The only time this will not be the case is if a member has their profile set to be invisible, which will hide the member's online status.

**View Online Today** - With this selected, you'll see a list of all members that have been online within the last 24 hours. The only time this will not be the case is if a member has their profile set to be invisible, which would hide the member's online status.

**View Birthdays** - This will update the member list to only show you the members who have a birthday today. However, if a forum member has their birthday hidden in their profile, they will not show up on this list on the day of their birthday.

**View All** - Using this will revert the member list back to displaying all members on the forum in alphabetical order.

Information on these and other areas may be found in the Forum's [Help Guide](#).





## Support Your Forum by Writing for Its Newsletter

By Editorial Staff

The simple truth is: since all of the Newsletter material is written by members, the survival of this Newsletter is entirely dependent upon member contributions.

We welcome articles written on any area of philately, as long as they are original works.

For instance:

- How did you come to be a stamp collector? Tell us about it...
- Did you attend an interesting philatelic exhibition or stamp venue? Tell us about it...
- Do you have expertise in a particular area? Tell us about it...
- Have you had a positive or negative online buying or selling experience? Tell us about it...
- Do you belong to an interesting stamp club? Tell us about it...
- Do you have a favorite stamp? Tell us about it...

If you are able to make posts on the Forum, you have the ability to prepare articles for this publication.

In addition to supporting the Forum, submitting material provides the opportunity for recognition by the American Philatelic Society through its Articles of Distinction program.

Submitting an article is easy—all we need is the file containing the article's text, annotated with suggested image locations, and the images sent as separate files.

If you'd like to have an article published in the next issue of the Newsletter (V7.2; Jan-Mar 2023), please attach the text and image files to an email and send it to [stampforum.net@gmail.com](mailto:stampforum.net@gmail.com) by not later than November 30, 2022. If files are too large for submission by email, use the free and secure file transfer service at [WeTransfer.com](https://www.wetransfer.com). Text files in Microsoft Word are preferred.



## TSF's Philatelic Library

By Steve Tomisek (tomiseksj)

The publications donated to our Forum by the [American Air Mail Society](#) (AAMS), in conjunction with the [American Philatelic Society](#) (APS), have sat idle since their arrival in mid-January. The procedures for checking out a book have been posted on the [Forum](#), along with brief descriptions of their content. The list of titles the Forum received are shown below.

That the books have remained on the shelf since their arrival is likely attributed to the requirement that members checking them out must pay the cost of postage and insurance for both delivery and return. The use of Forum funds to cover some or all of the postage cost would be inappropriate.



In an effort to ensure that this valuable Forum resource isn't squandered, I am willing, as my time permits, to entertain reasonable requests to research information contained within these publications. Requests for assistance from members who have not yet achieved full membership status, a criteria for being able to check out publications, will likely not be acted upon (unless I have an abundance of free time).

---

### AVAILABLE TITLES

#### AERIAL MAIL SERVICE

AMERICAN AIR MAIL CATALOGUE, Seventh Ed.-Volume 1-3

AMERICAN AIR MAIL CATALOGUE, Sixth Edition — Volume 1-3

BALLOON POST OF THE SIEGE OF PARIS, 1870-71

CORREIO AEREO: A HISTORY OF THE DEVELOPMENT OF AIR MAIL SERVICE IN BRAZIL

GLIDER MAIL: AN AEROPHILATELIC HANDBOOK

INDEXES TO THE AIRPOST JOURNAL, Volumes 1-60, 1929-1989 and AERO PHILATELIST ANNALS, Volumes 1-25, 1953-1971 and 1975-1982

MAX - I didn't get to know him very well

NEWFOUNDLAND AIR MAIL, 1919 – 1939

O.A.T. AND A.V.2 MARKINGS - Third Edition

PERUVIAN CIVIL AVIATION

ROCKET MAIL FLIGHTS OF THE WORLD TO 1986

THE AIRMAILS OF CANADA AND NEWFOUNDLAND First Edition

THE PIONEER AIRPLANE MAILS OF THE UNITED STATES

VIA AIRMAIL: An Aerophilatelic Survey of Events, Routes, and Rates

## In Closing...

My thanks go to those who have contributed content for this issue and all of the previous issues. As was stated in the last issue, if you review the names of the authors, you'll see that it is a relatively small proportion of our membership.

I'd also like to thank our assistant editors, Peter Ware (@brightonpete) and Jerry Bodoff (@JerryB) for their help in pulling each of the Newsletter issues together.

Member support is essential if we are to continue publishing a Newsletter. Any contributions of a philatelic nature will be considered for inclusion in a forthcoming issue (e.g., a catalog or book review, what I collect and why, a stamp show or bourse review, an intro to my local club, etc.).

Please consider trying your hand at writing something for publication. If you aren't sure how to go about it, contact one of the editorial staff and we'll be happy to assist.

We're on track for having each Newsletter published the week prior to the period covered. To continue meeting that target, we'd like to receive your submissions not later than November 30, 2022.

When contributing material, Microsoft Word files are preferred, with images submitted as separate files. Although we can work with PDF files with embedded images, it makes for a more tedious process.

Thanks for your continued support!

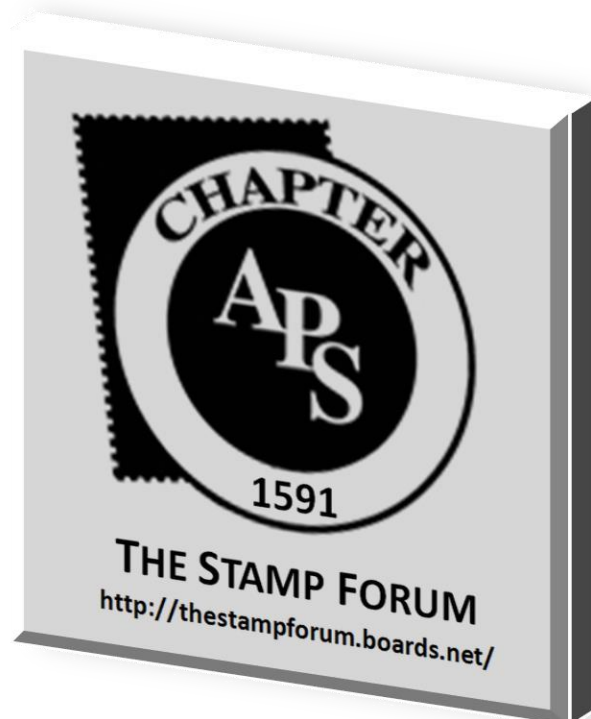




The Stamp Forum became a Chapter of the American Philatelic Society on February 28, 2014. A requirement of that membership was our obligation to abide by APS's [Philatelic Code of Ethics](#).

While most of the benefits of Chapter membership are best-suited for physical stamp clubs, there are several that are applicable to us. For example, we are listed in the APS club directory, are able to participate in the [Articles of Distinction](#) program, and receive a copy of [The American Philatelist](#), the monthly journal of the Society.

If you are not an individual APS member, please consider [joining](#) the organization. If you are going to apply for membership, please indicate Chapter 1591 as your sponsor.



## It's Time for a Stamp Club Meeting

*Join us!*

- Would you like to join a stamp club but you either can't find one or its meeting time doesn't fit your schedule?
- Would you like to discuss stamps with other collectors at any time you choose, day or night?
- Do you have questions about your stamp collection that you'd like to have help in answering?

If you answered yes to any of these questions, we can help! The Stamp Forum, Chapter 1591 of the American Philatelic Society, meets online, 24/7 at [thestampforum.boards.net](http://thestampforum.boards.net). Feel free to check us out. If you have questions, please send them to us at [stampforum.net@gmail.com](mailto:stampforum.net@gmail.com).

